



GEO Blue Planet 5th Symposium

Local action in support of global traction

24 - 28 Oct 2022 | Accra, Ghana

5th Symposium | Accra, Ghana | 24 – 28 October 2022



Creating maps and apps using the ArcGIS Living Atlas

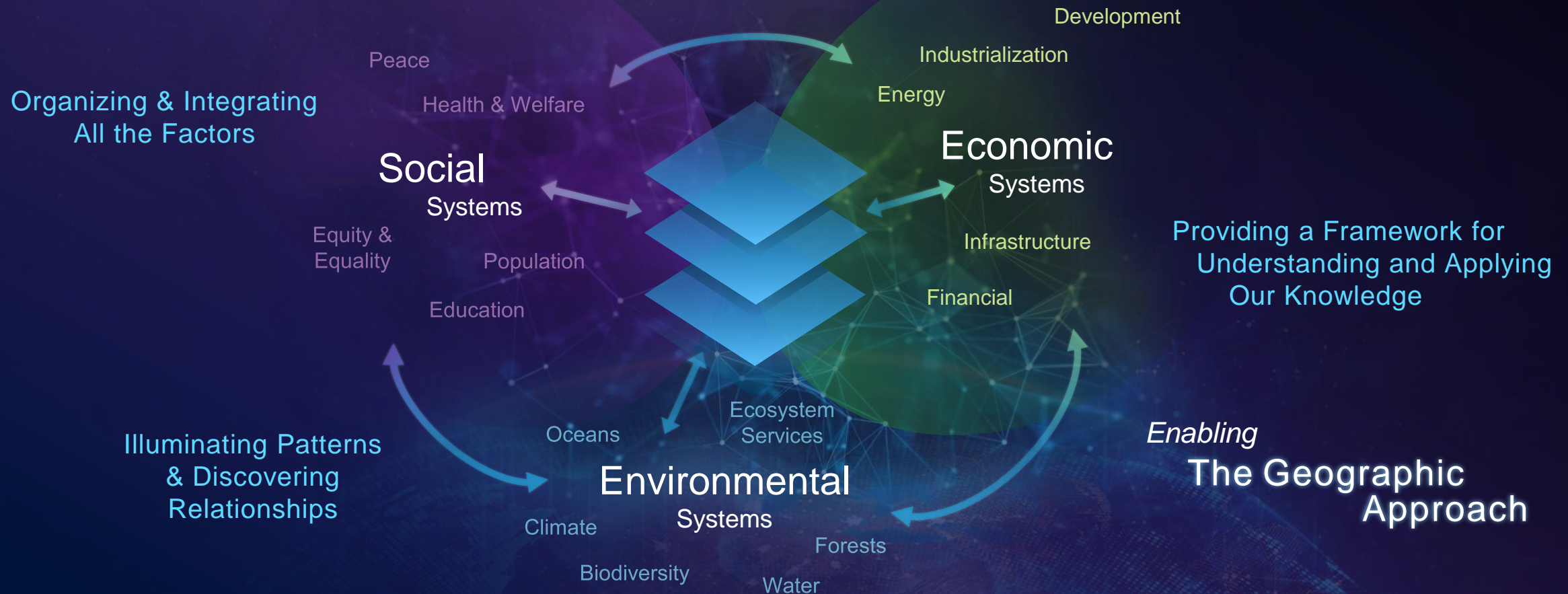
Pauline, Solution Engineer - Esri



Sustainability Requires . . .

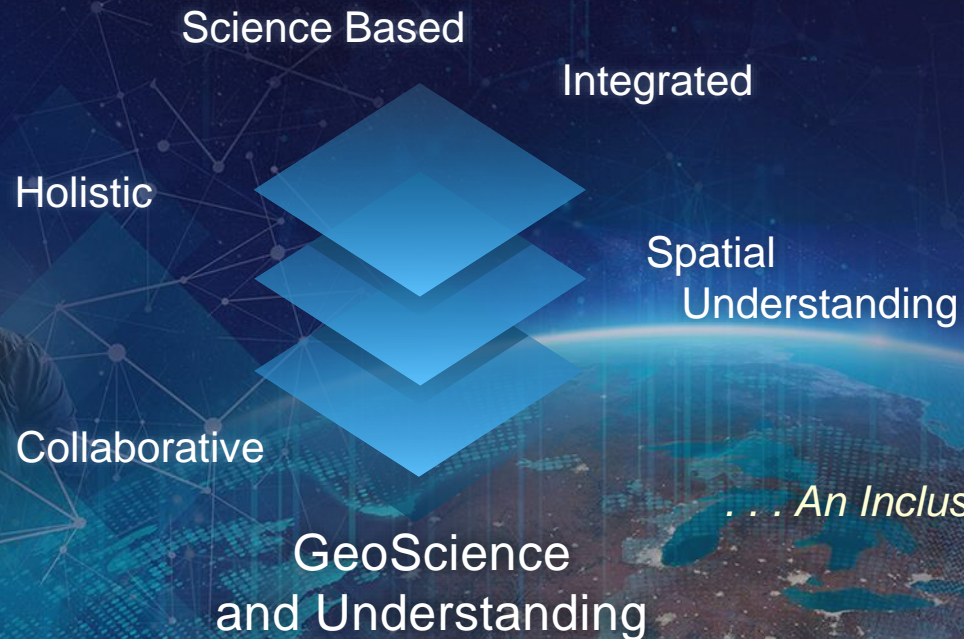
We See the World as One Single Ecosystem

Geography Provides the Science & Language to Do This



The Geographic Approach

A Way of Thinking and Problem Solving
That Integrates Geographic Science & Information
Into How We Understand and Manage Our Planet



*... An Inclusive and Multi-Disciplinary Process
Impacting Every Sector of Society*

The Geographic Approach

Enables Us to...

Regulatory

Promote equitable access to the natural environment

Management

Protect, restore and manage our natural resources

Collaboration

Improve quality of life through collaboration in protection of our resources

Understand

Current Landscape

Mapping &
Visualization



Data
Management



Field Mobility



Monitoring



Analytics



Plan

A Sustainable Future

Design &
Planning



Decision
Support



Constituent
Engagement



Sharing &
Collaboration



Act

Collaborate and Engage

Constituent
Engagement

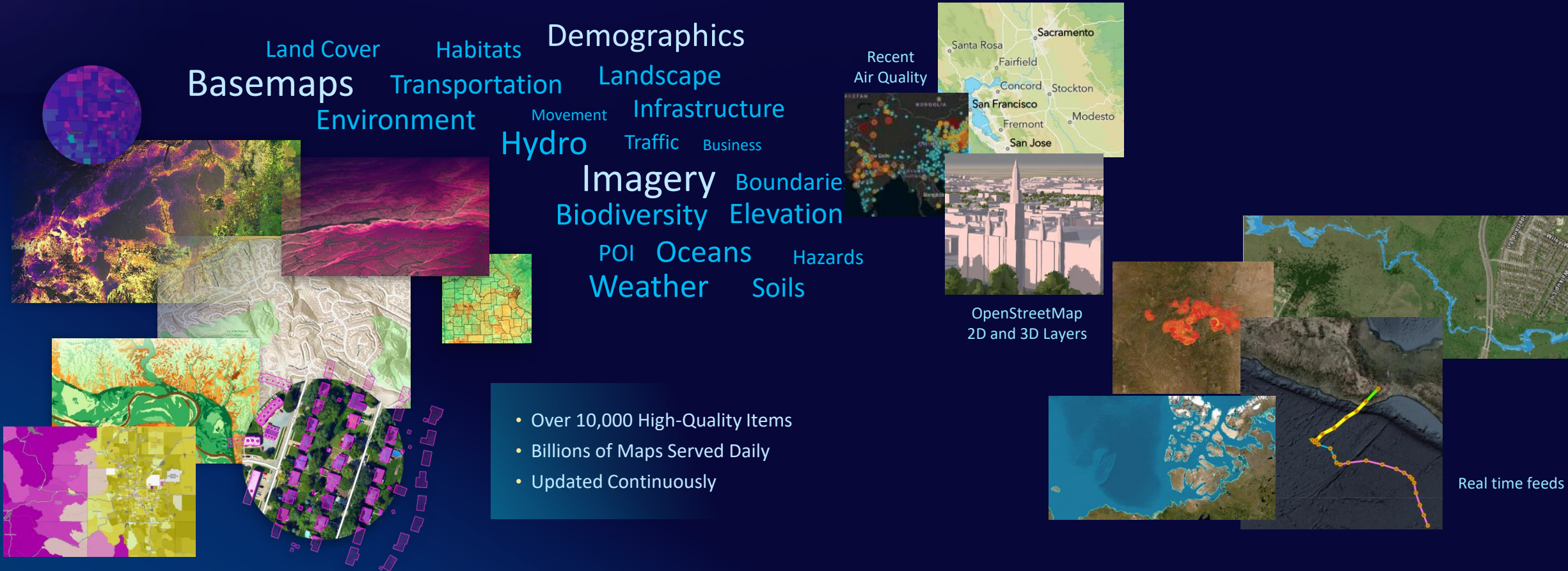


Sharing &
Collaboration



ArcGIS includes a Living Atlas of the World

Curated Collection of Ready-to-Use Maps, Layers, and Apps



The collage features several map layers and data visualizations:

- Land Cover**: A circular inset showing a pixelated map of land cover.
- Basemaps**: A large, colorful, abstract map layer.
- Environment**: A map showing a river and surrounding land.
- Hydro**: A map showing a river and surrounding land.
- Imagery**: A 3D rendering of a city skyline.
- OpenStreetMap 2D and 3D Layers**: A map showing a city skyline.
- Real time feeds**: A map showing a river and surrounding land.

Basemaps **Land Cover** **Habitats** **Demographics** **Transportation** **Landscape** **Environment** **Hydro** **Imagery** **Boundaries** **Biodiversity** **Elevation** **POI** **Oceans** **Hazards** **Weather** **Soils** **Movement** **Infrastructure** **Traffic** **Business**

- Over 10,000 High-Quality Items
- Billions of Maps Served Daily
- Updated Continuously

Recent Air Quality

OpenStreetMap 2D and 3D Layers

Real time feeds

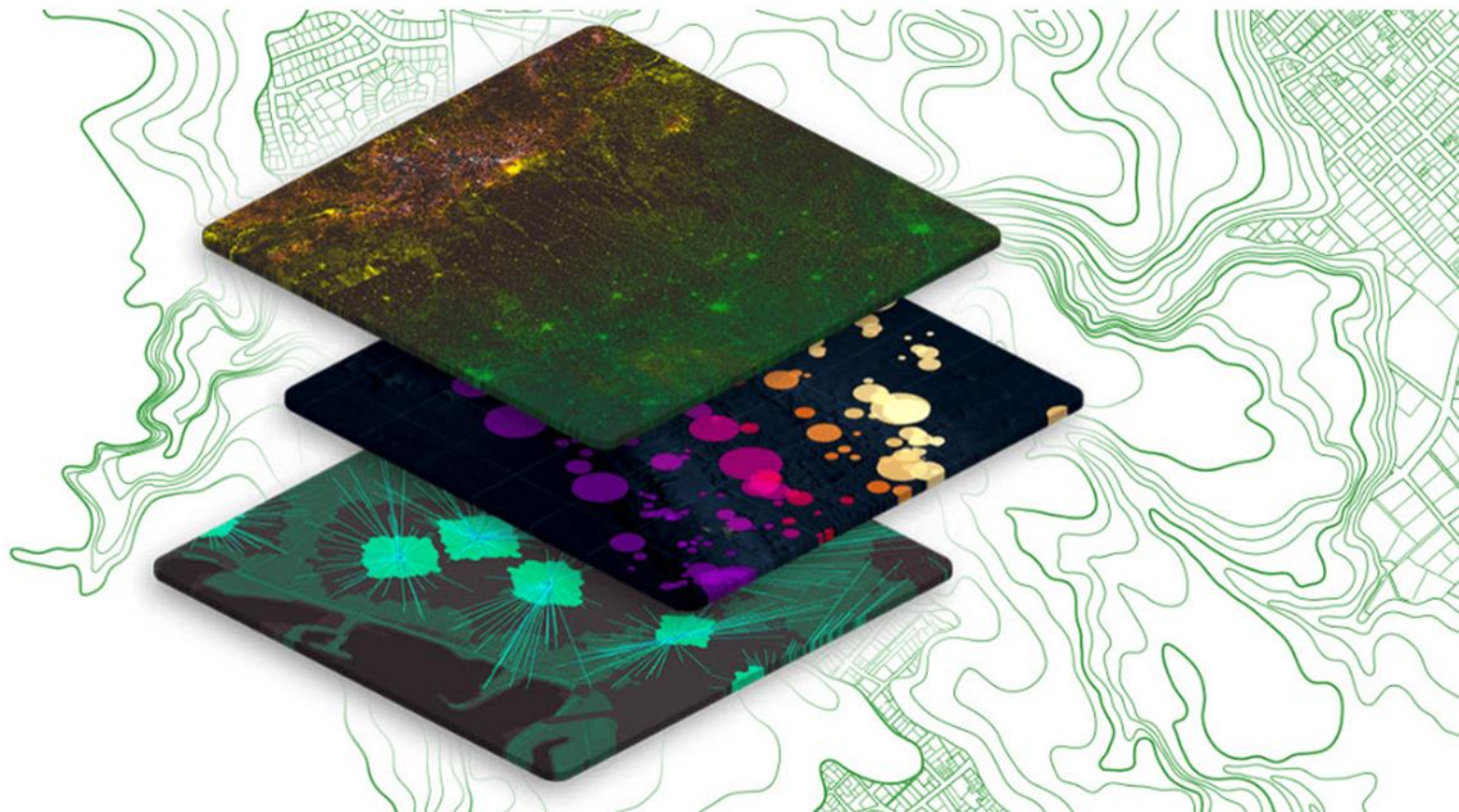
Built from Best Available Commercial and Community Sources



ArcGIS Living Atlas of the World

The world's foremost collection of geospatial information

Explore Living Atlas →



Layers



Web Maps



Scenes



Apps & Stories



Tools



Resources

1. Esri Ocean Science

- Page: <https://www.esri.com/en-us/about/science/initiatives/ocean-science>
- Resources: <https://www.esri.com/en-us/about/science/resources#ocean>
- Hub: <https://oceans-esri oceans.hub.arcgis.com/>

2. ArcGIS Living Atlas of the world

- Content: <https://livingatlas.arcgis.com/en/browse/#d=2&categories=Environment%3A0100000000>
- Ecological Marine Unit explorer: <https://livingatlas.arcgis.com/emu>
- Indicators of the planet: <https://experience.arcgis.com/experience/003f05cc447b46dc8818640c38b69b83>

3. ArcGIS StoryMaps on Oceans: <https://www.esri.com/en-us/arcgis/products/arcgis-storymaps/contest/gallery/2021-winners>

4. Create an account to visualize and analyze marine data then create apps:

- GeoPortal accounts: Africa GeoPortal > <https://www.africageoportal.com/> Caribbean GeoPortal > <https://www.caribbeangeoportal.com/>
- Public account: <https://doc.arcgis.com/en/arcgis-online/get-started/create-account.htm>
- Developer account: <https://developers.arcgis.com/sign-up/>



Thank You.
Medaase.
Oyiwaladon.