



Coastal zone risks assessment and capacity building needs

Plenary session #3
Coastal Hazards



Prof. Kwasi Appeaning Addo

*Managing Director
University of Ghana
Institute for Environment and Sanitation Studies*

5th Symposium | Accra, Ghana | 24 – 28 October 2022



5th Symposium | Accra, Ghana | 24 – 28 October 2022

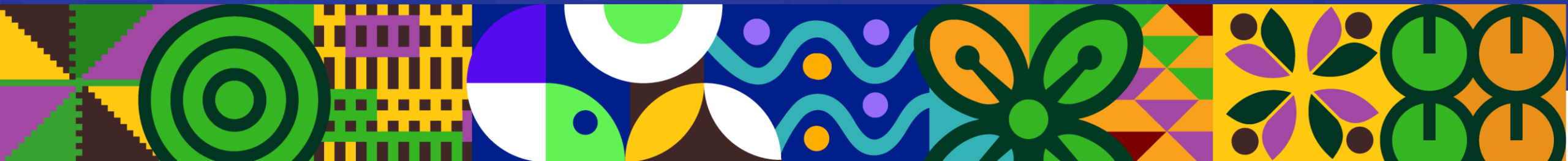


Coastal Zone Risk Assessment and Capacity Building Needs

Kwasi Appeaning Addo (Ph.D.)

Philip-Neri Jayson-Quashigah (Ph.D.)

University of Ghana



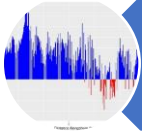
Outline



Ghana coastal zone



Identified Coastal Hazards



Risk Assessment Efforts

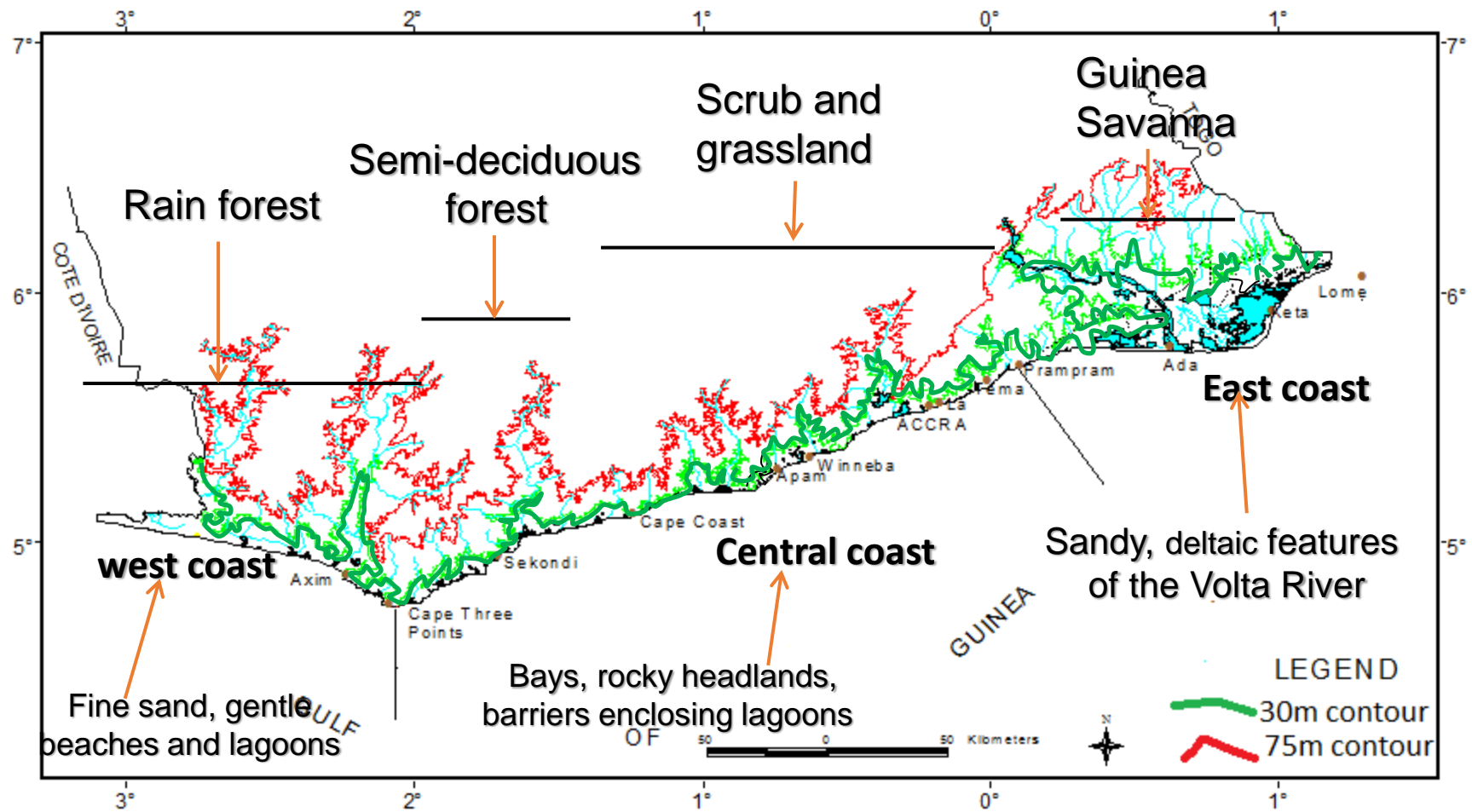


Challenges



Need for Capacity Building

Ghana's coastal zone



Coastal Hazards

Coastal erosion

Coastal flooding

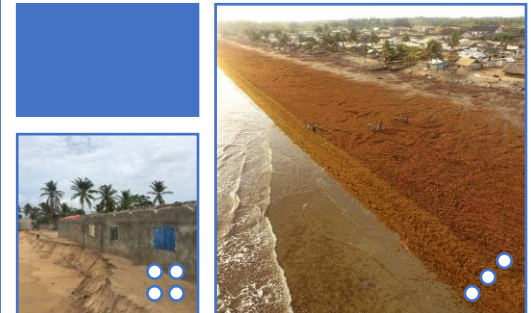
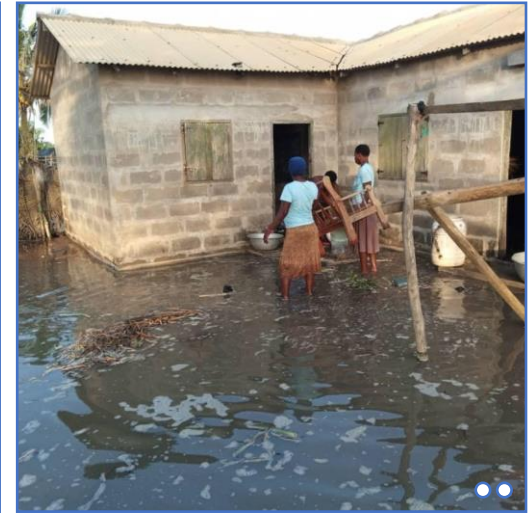
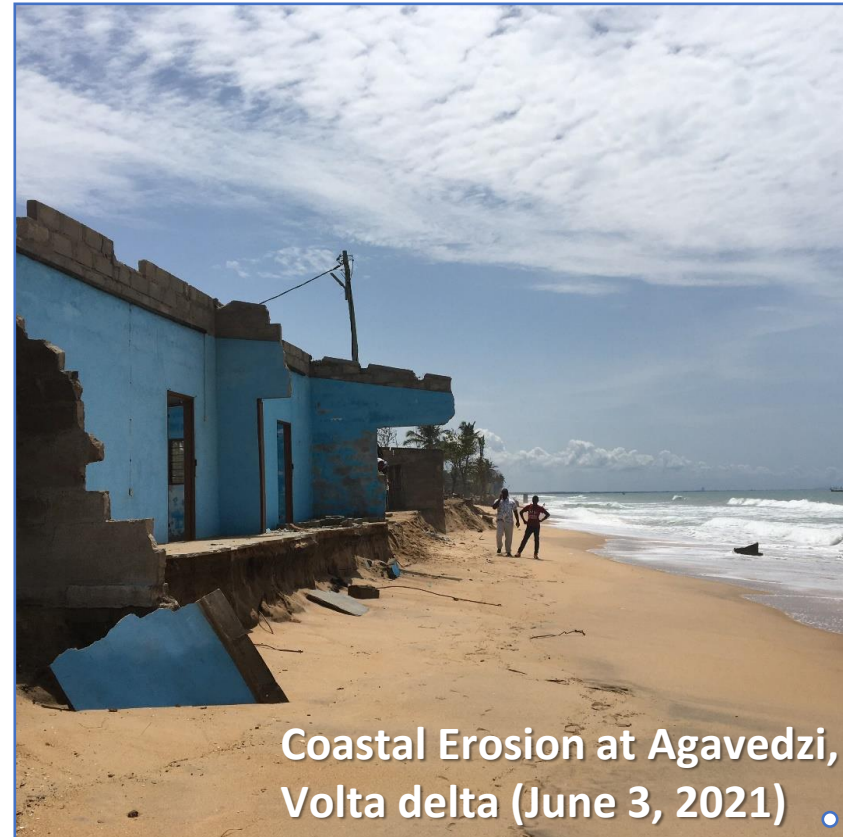
Saltwater intrusion

Subsidence

Storm surge

Sargassum invasion

Coastal development



Coastal erosion – lack of space!!!



Coastal erosion at Fuvemeh

**School building
February 2016**



June 2016



Sept 2016



From 2005 and 2017:

- About 37% of Fuvemeh land area lost to erosion
- Over 77 houses destroyed
- Over 300 inhabitants displaced
- In 2022 the entire community is almost lost

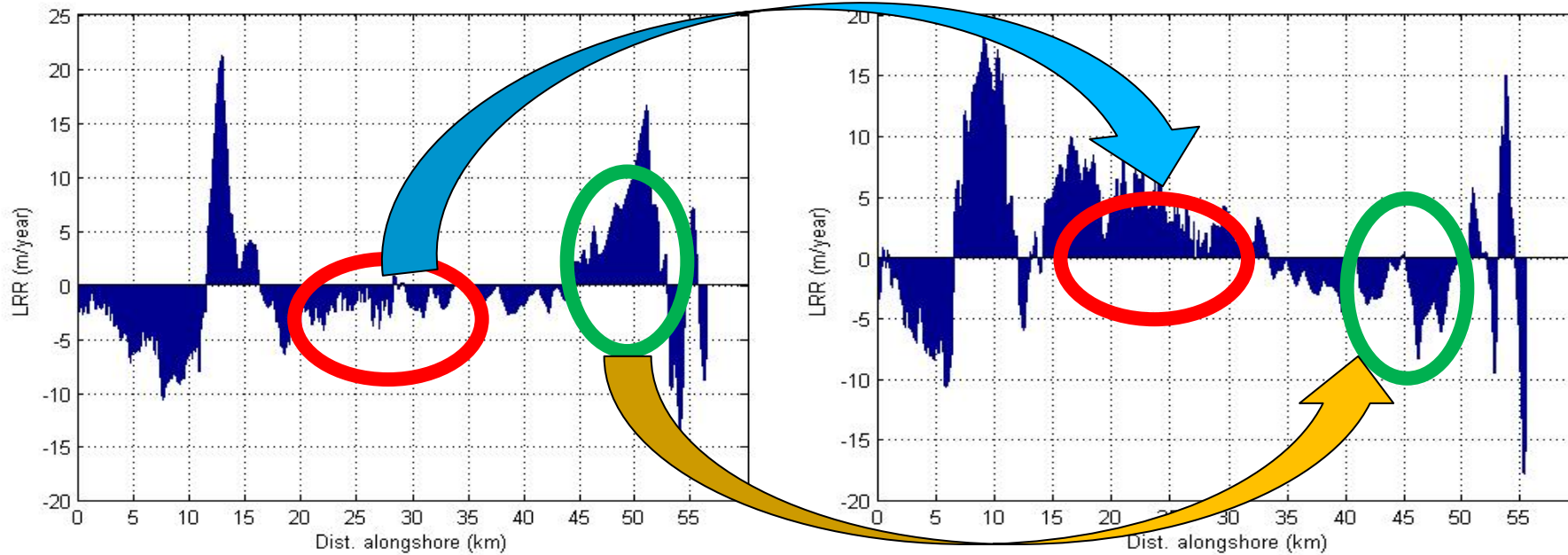
Managing Coastal erosion in Ghana



Impact of Keta sea defense project

Before KSDP (1986 to 2001)

- 72% eroding
- Erosion rates between 0.01 & 15.30 m/yr; average = 3.04 m/yr
- accretion rates between 0.01 m/yr & 21 m/yr; average = 5.80 m/yr.



After KSDP (2001 and 2013)

- 47% eroding
- erosion rates between 0.01 & 17.74 m/yr; average = 3.40 m/yr
- accretion rates between 0.01 & 18.22 m/yr; average = 5.15 m/yr.

Approaches adopted

GPS (RTK) mapping



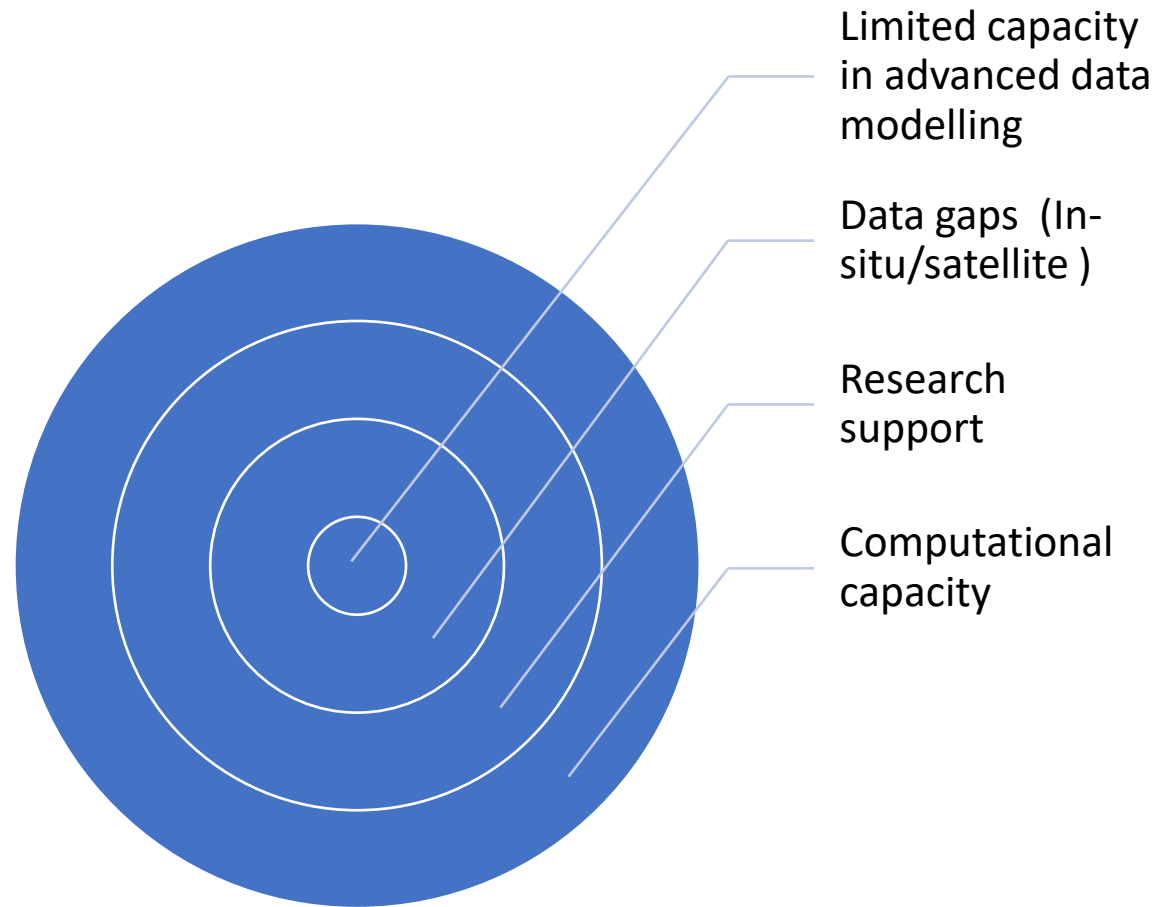
Videogrammetry



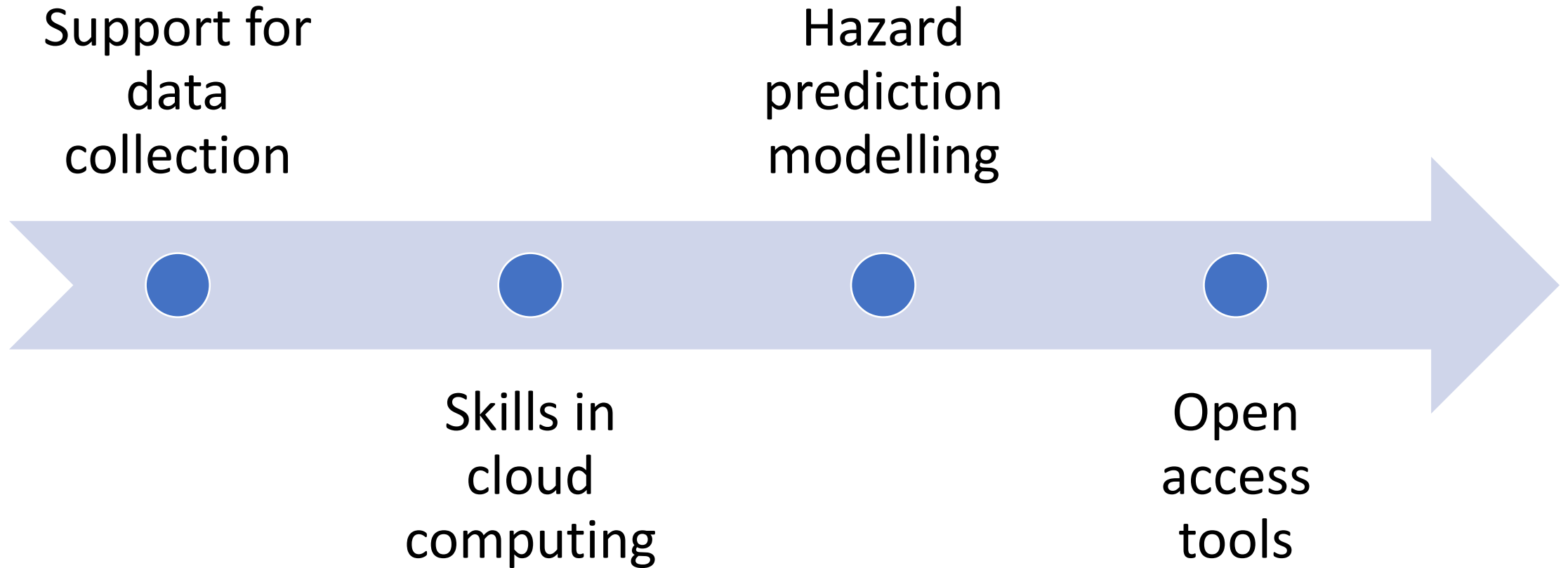
Drone



Challenges



Capacity Building Needs





Thank You
Medaase
Oyiwaladon

