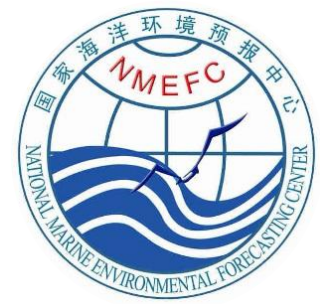


4TH 
**BLUE PLANET
SYMPOSIUM**

4-6 July 2018 – Toulouse, France

National Marine Environmental Forecasting
Center (NMEFC)
CHINA



Ocean forecasting information and its social benefits in China

Liying Wan and Xiaolei Yi



#GEOBluePlanet4

Structure of Chinese Forecast Organization

National Center

- National Marine Environmental forecasting Center

Regional Center

- North Marine Environmental forecasting Center
- East Marine Environmental forecasting Center
- South Marine Environmental forecasting Center

Province Center

- Liaoning
- Heibei
- Sandong
- more than 11 province

City Center

- Dalian
- Qinhuangdao
- Yantai
- more than 20 cities



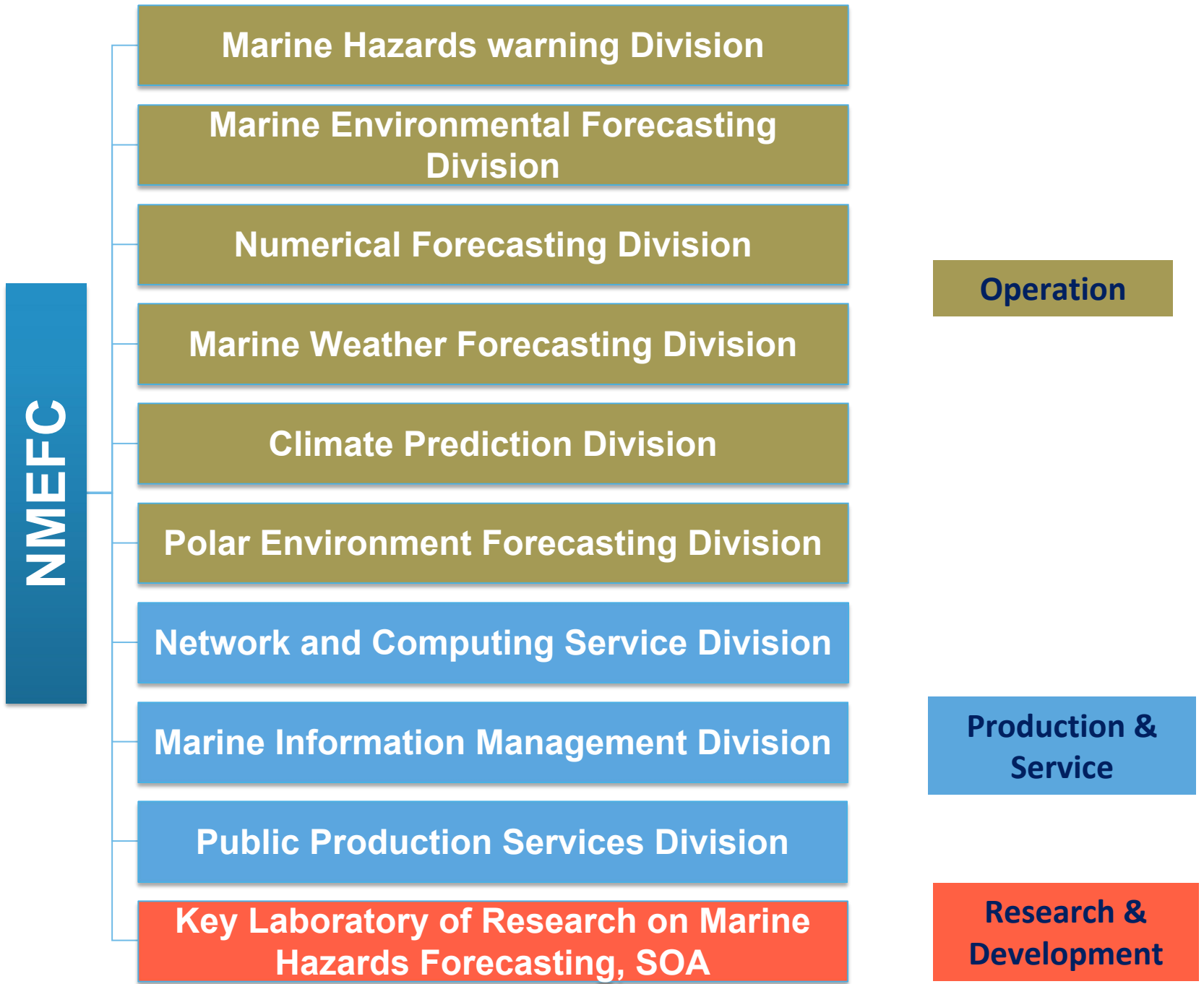
Outline

- Introduction of NMEFC
- Status of marine forecasting and pre-warning
- Cases of Social benefits
- Summary and future

Overview

- NMEFC, Chinese national center for ocean forecasting
- Affiliated with the Ministry of Natural Resources that receives financial support from the Chinese government
- Over 300 scientists and engineerings
- Authorized by the State Council Academic Degrees Committee of Physical Oceanography and Meteorology to grant Master's degrees
- Leading authority that specializes in marine environmental and disaster forecasting and warning systems, scientific research, and consulting services
- Actively engaged in partnerships with international scientists and agencies





NMEFC

Marine Hazards warning Division

Marine Environmental Forecasting Division

Numerical Forecasting Division

Marine Weather Forecasting Division

Climate Prediction Division

Polar Environment Forecasting Division

Network and Computing Service Division

Marine Information Management Division

Public Production Services Division

Key Laboratory of Research on Marine Hazards Forecasting, SOA

Operation

Production & Service

Research & Development

Established as the Marine Hydro-meteorological Forecasting General Observatory



1965

Marine weather and wave forecast (China sea)
Sea ice forecast (Bohai sea)
Tropical cyclone storm surge forecast
Extra-tropical storm surge forecast
Sea temperature forecast (East China sea)



1966-1976

Renamed as the National Marine Environmental Forecasting Center



1983

release forecasts to public by radio and TV
El Niño forecast
numerical temperature-salinity-currents and ocean wave forecasting systems for the China Sea and Northwest Pacific Ocean
red tides forecast
tour and beach environment forecast
tsunami forecast



1986-2010

Tsunami Warning Center of SOA Chinese Global Operational Oceanography Forecasting System (CGOFS)



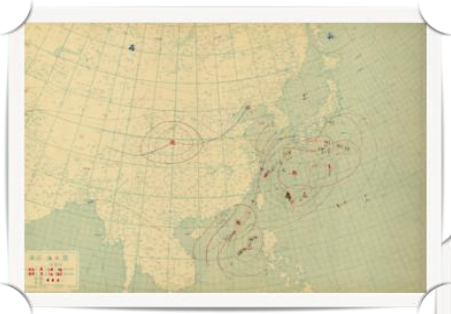
2013

IOC/UNESCO South China Sea Tsunami Advisory Center (SCSTAC) starts to be trial-operational



2018

History



Real-time data receiving system

Coastal observing stations

more than 20 key marine stations, including 109 observing points (till now):

Temperature, Salinity, Tide, Wave, Wind, Marine chemistry...

Buoys

25 large-size buoys for meteorology and wave height, temp.,

2 offshore small-size buoys ;

2 Deep-sea Moorings ;

4 offshore bottom-mounted moorings ;

2 tsunami buoys.

Radars

5 Ground wave Radar for current, wave field;

2 X-band Marine Radar for wave field;

1 Radar Ice Sounder for Sea ice regime, thickness

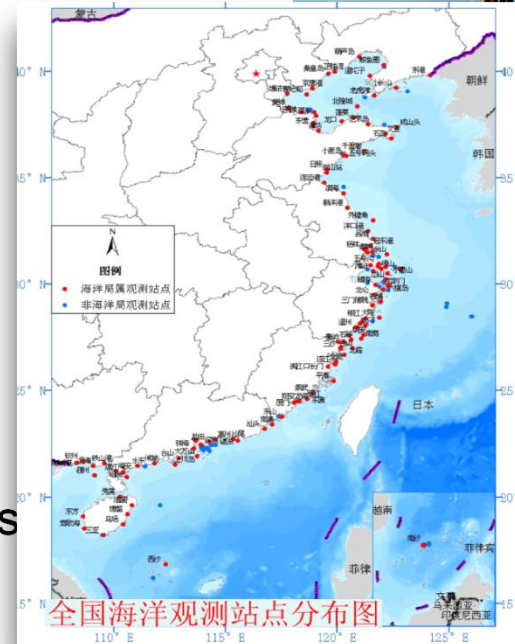
International sources

GTS

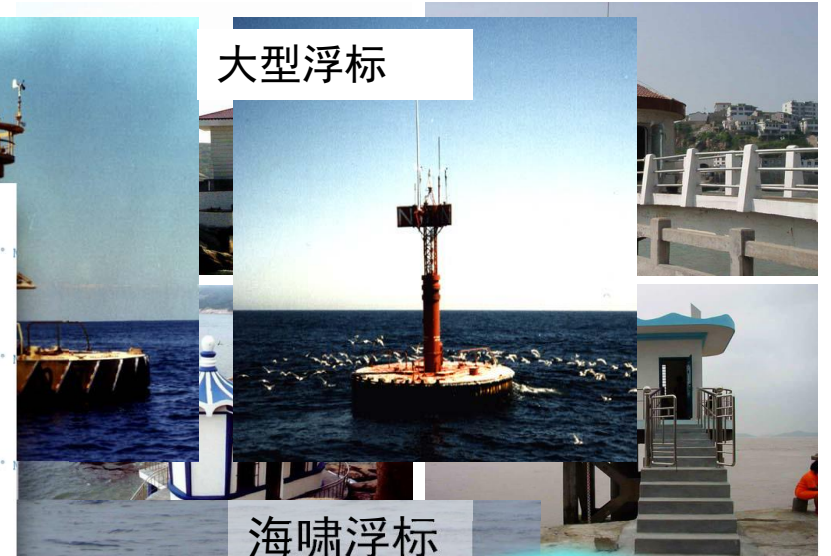
Agro



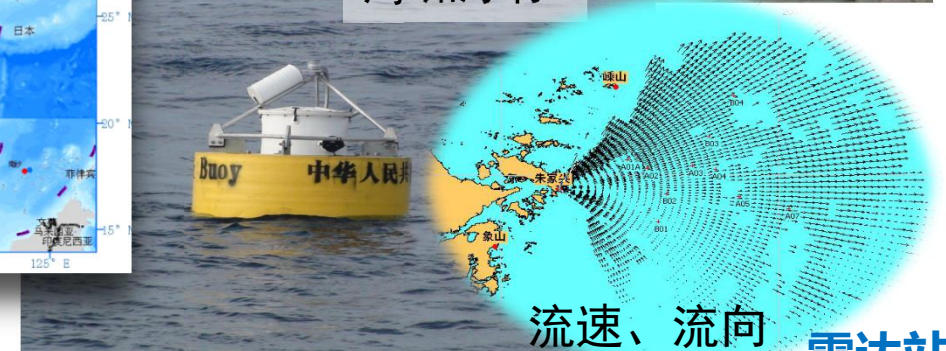
大型浮标



全国海洋观测站点分布图



海啸浮标



流速、流向

雷达站

High Performance Computation Systems

Sunway Cluster



IBM Cluster

- Peak Performance ~ 350 TFlops
- Online Storage ~ 400 TB
- Supporting ~ 100 numerical forecast systems

Video Consultation system in China



Covered all the coastal region



To keep the operational video consultation



Provide the guide of different video consultation setup



Provide the skill training



More than **300 times** video conference

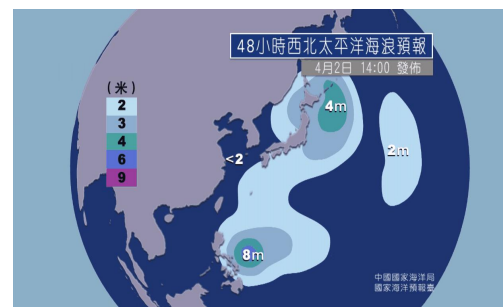
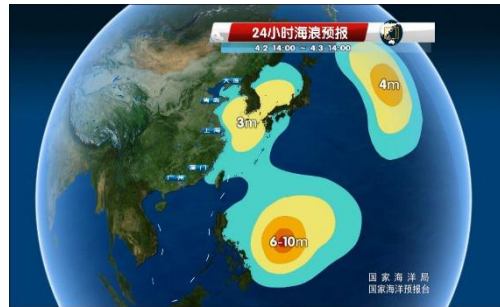
Release to public

Operating maintenance a lot of News Clients, like Daily Headlines, Webchat and so on.

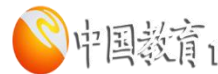
- more than 430 papers and videos;
- more than 2 millions pageviews of Daily Headlines, 3 millions pageviews of Netease News;
- more than 200 thousands pageviews of top news;
- more than 180 thousands of top video.



Release to public



Central Media
CCTV
China National Radio
China Radio International

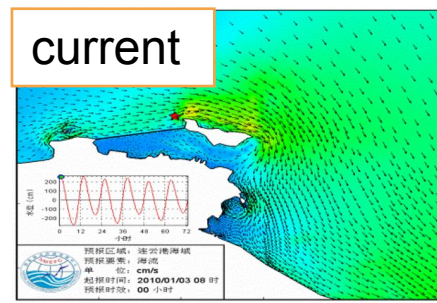
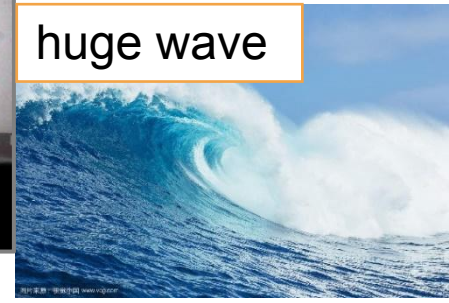
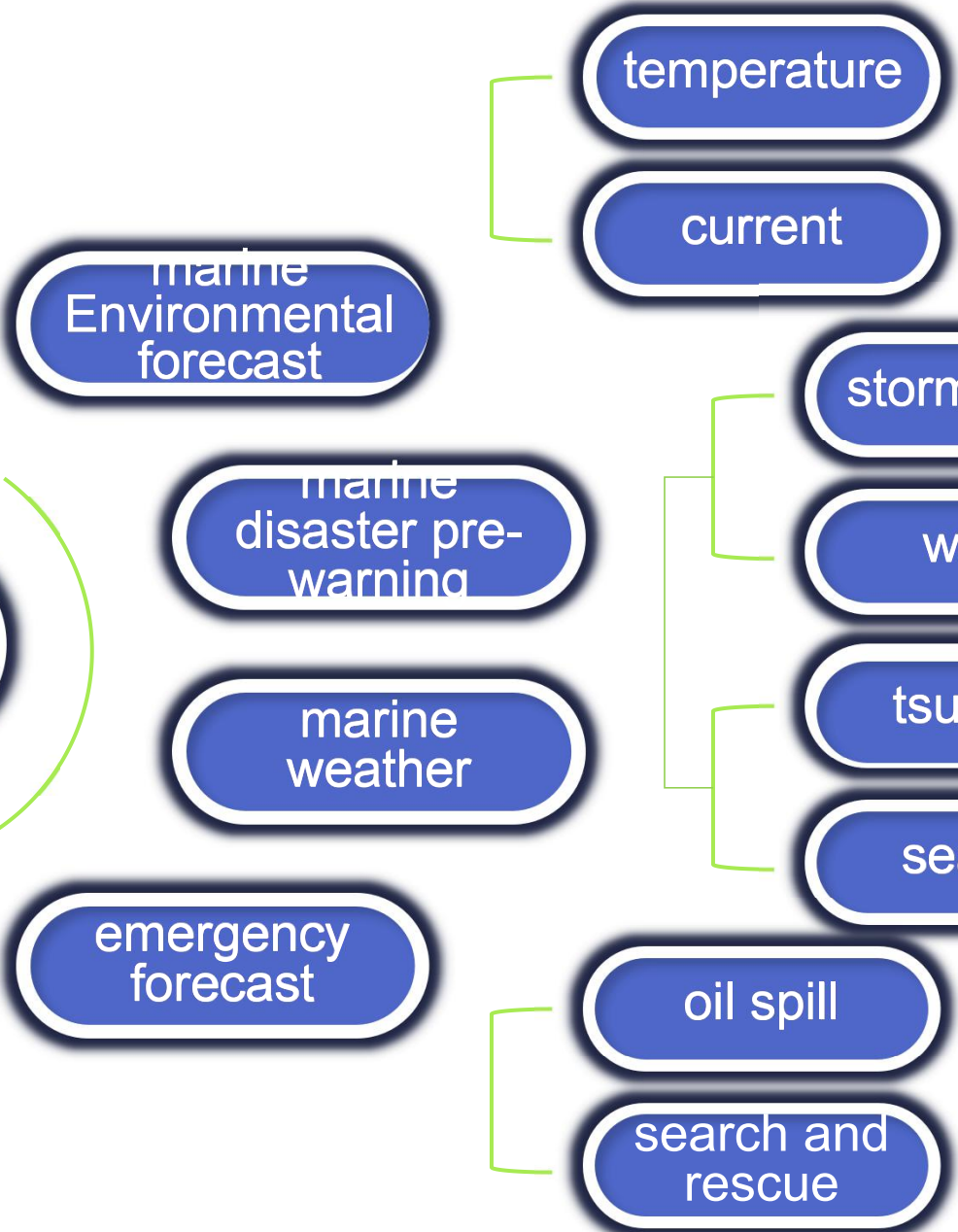


7 programs in CCTV,
CETV, Phoenix
Satellite TV and the
Travel Channel

Outline

- Introduction of NMEFC
- **Status of marine forecasting and pre-warning**
- Cases of Social benefits
- Summary and future

products



Touring

观光指数	1
海况指数	1
水质指数	3
防晒指数	1

8/23 10:00#-8/24 10:00# 国家海洋局 国家海洋预报台

We hope we could

Integrated systems

from global to coast

01

Refined techniques

high resolution, more accuracy

02

Diversificated elements

temerature, salinity, wave
hight, eddy,mix layer
thickness and so on

03

Customized services

optimal ship route,
optimal work window

04

Self-dependented innovation

marginal sea model,
storm surge model

05

1. 预报系统一体化

2. 预报技术精细化

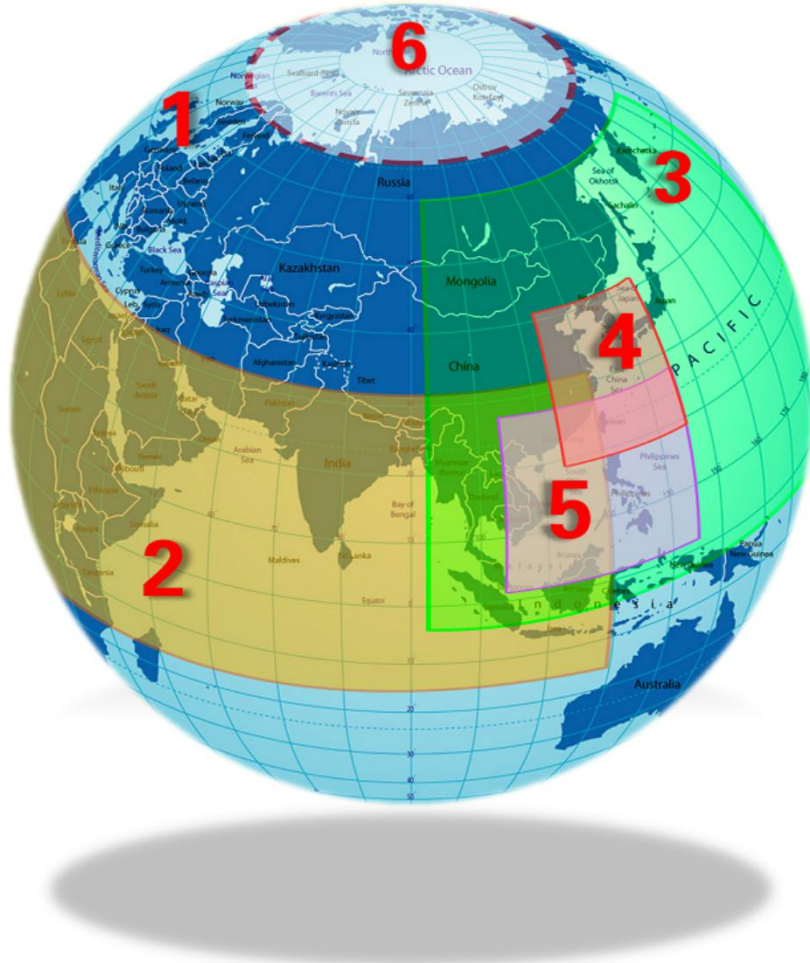
3. 预报要素拓展化

4. 预报保障定制化

5. 预报创新自主化

Status of Operational Oceanography in NMEFC

Chinese Global operational Oceanography Forecasting System (CGOFS v1.0) and extended forecast system



Global Oceanography Forecasts:

Level 1: Global Ocean

Level 2:

*Northwest Pacific and
Indian Ocean*

Level 3:

*Bo-Sea, Yellow-Sea, East China Sea and South
China Sea*

Level 4: Polar Region

Refined forecasts:

China Coastal Zone

Ecological Forecasts:

Level 1: Northwest Pacific

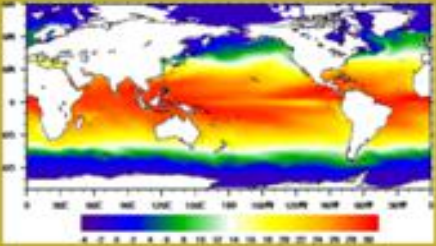
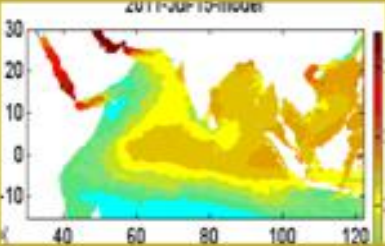
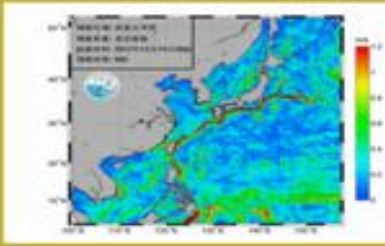
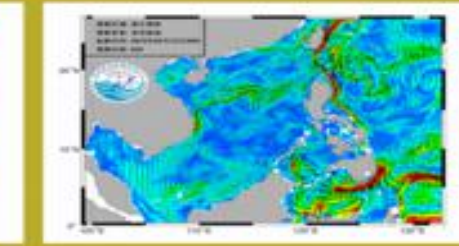
Level 2: East and South China sea

Climate Prediction:

Level 1: Global

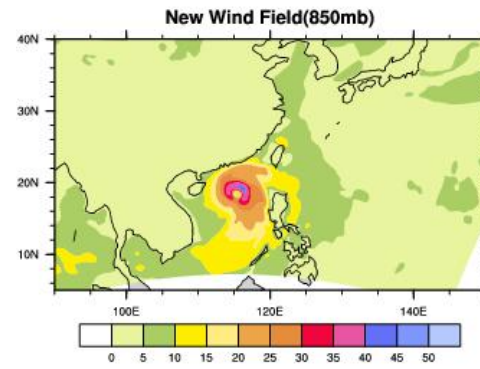
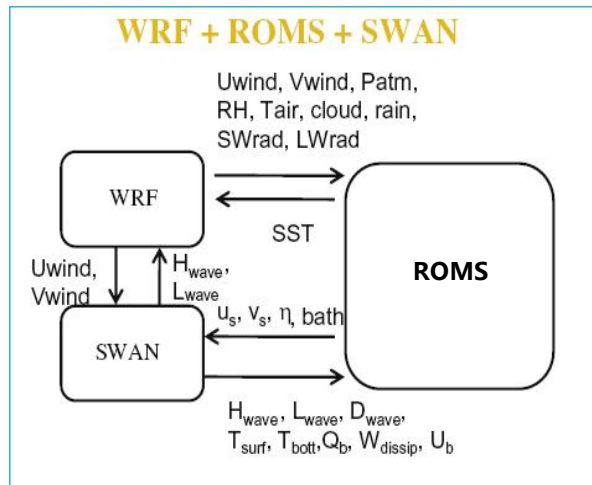
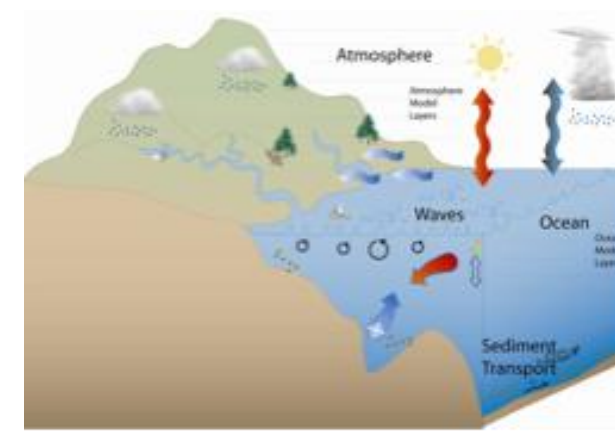
Level 2: Asia & Northwest Pacific

Detailed of systems

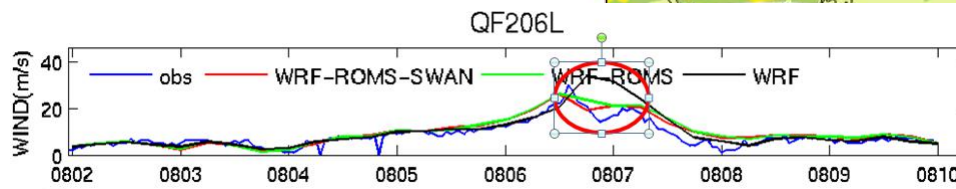
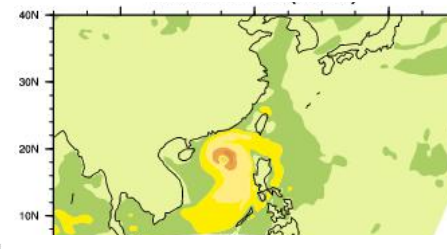
				
	Global	Indian Ocean	Northwestern Pacific	East/South China Sea
Resolution	1°/4 , 50 levels	1°/12,20levels	1°/20 , 22 levels	1°/30 , 30(36) levels
Model	MOM4	ROMSv3.5		
Atmospheric forcing	CGOFS-Wind	NMEFC-WRF		
Assimilation scheme	3DVar	EnOI		
Data assimilated	RTGSST , SSH , Argo T/S	MGDSST SSH	MGDSST SSH	MGDSST/MGDSST, SSH , Argo T/S
Product	temperature、current (surface, 20m, 50m, 100m, 200m, 500m,1000m, profiles)			
Forecast range	120hr			

Air-Sea Coupled system for Typhoon

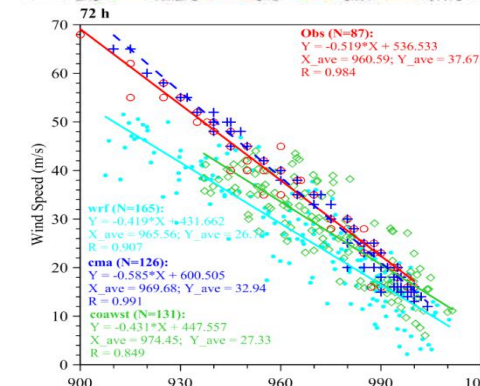
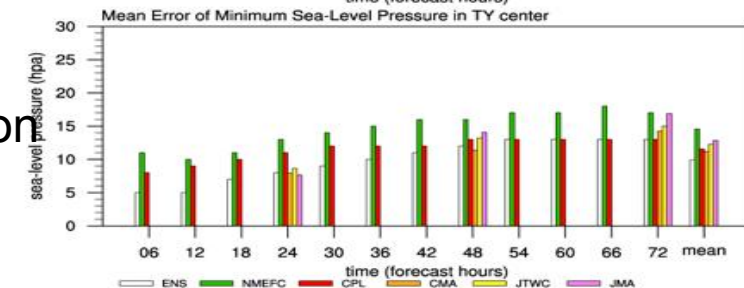
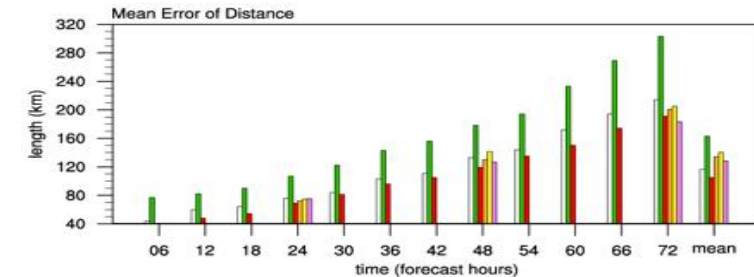
- harmonious physics processes
- synchronous forecast both atmosphere and ocean



Initial location of Typhoon



more accuracy of typhoon intensity change



improved more between track, intensity, wind and pressure

We hope we could

Integrated systems

from global to coast

01

Refined techniques

high resolution, more accuracy

02

Diversificated elements

temerature, salinity,
wave hight, eddy,mix
layer thickness and so

03

Customized services

optimal ship route,
optimal work window

04

Self-dependent innovation

marginal sea model,
storm surge model

05

1. 预报系统一体化

2. 预报技术精细化

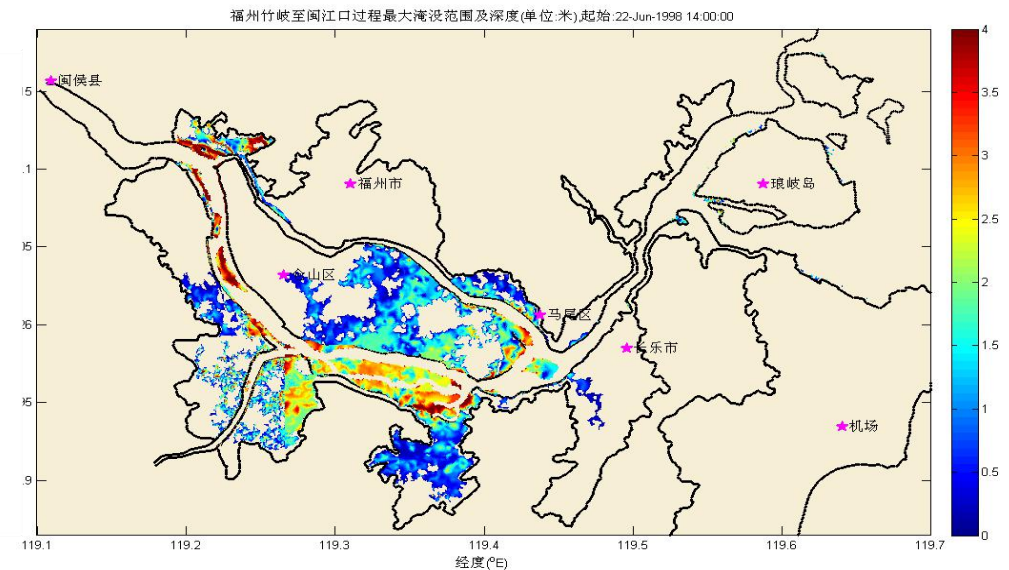
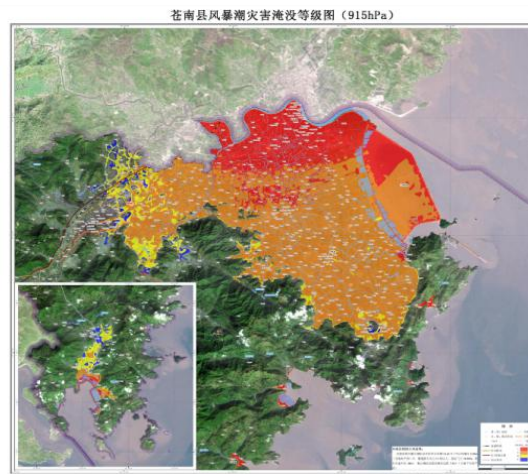
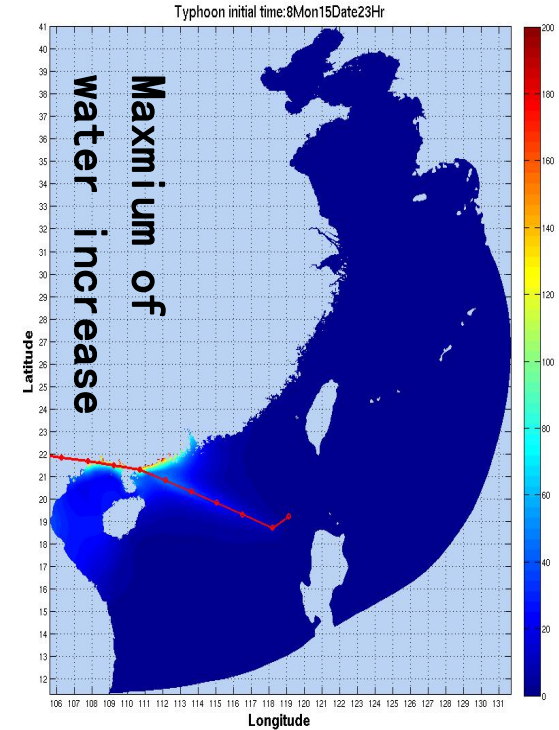
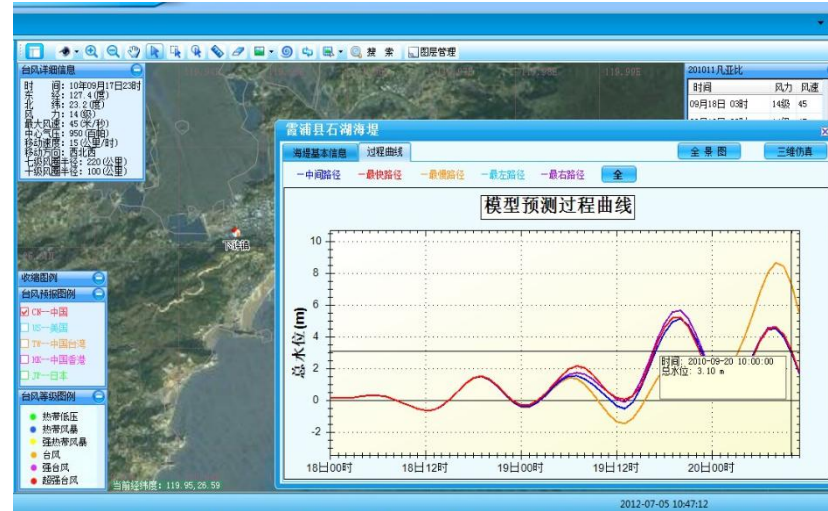
3. 预报要素拓展化

4. 预报保障定制化

5. 预报创新自主化

Storm Surge

- High resolution storm surge numerical forecasting system
- Storm surge and Wave Overflow numerical forecasting system (SWOFS)
- Storm surge and Wave Floodpain numerical forecasting system (SWIFS)
- Risk evaluation and regionalization of storm surge disaster

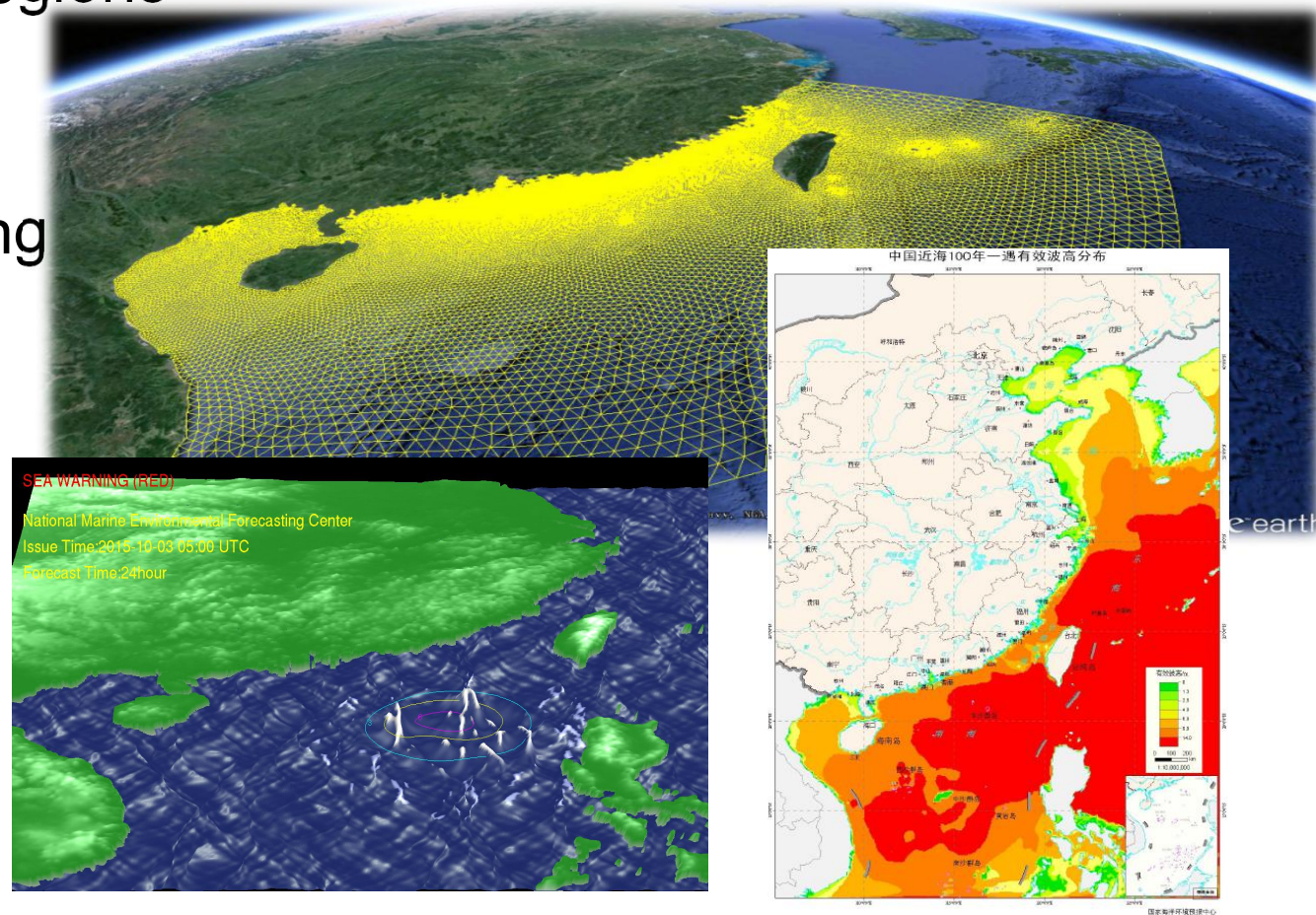


Ocean Wave

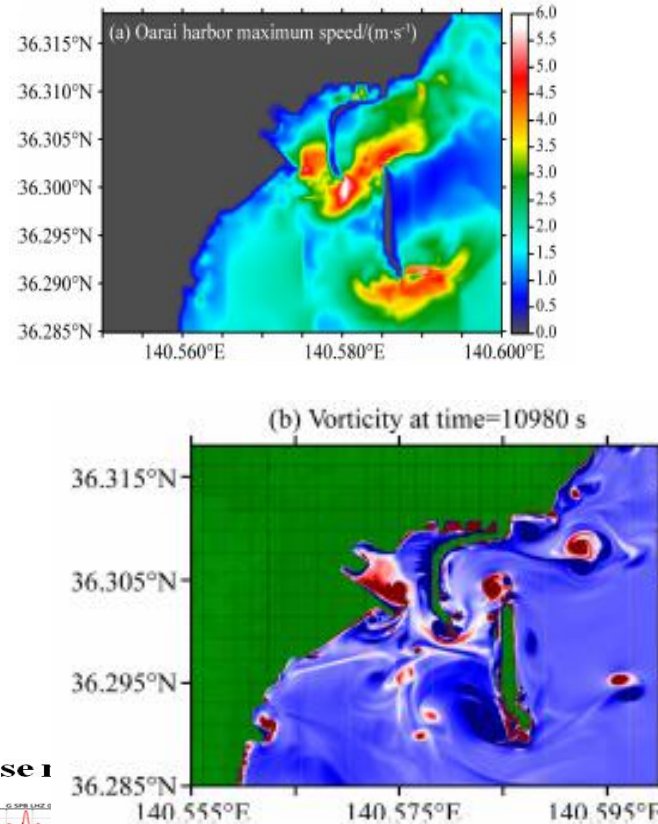
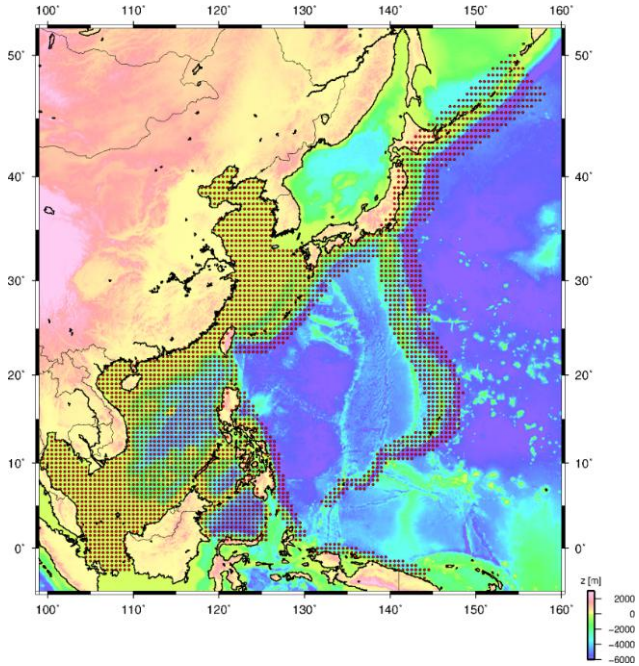
A Unstructured refine ocean wave numerical forecasting system in coastal regions

B Visualization of wave forecasting products

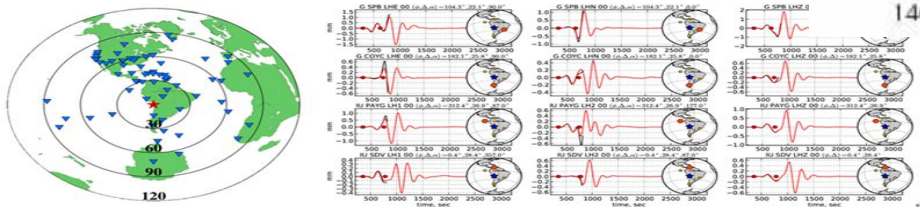
C Analysis of the centennial recurrence period



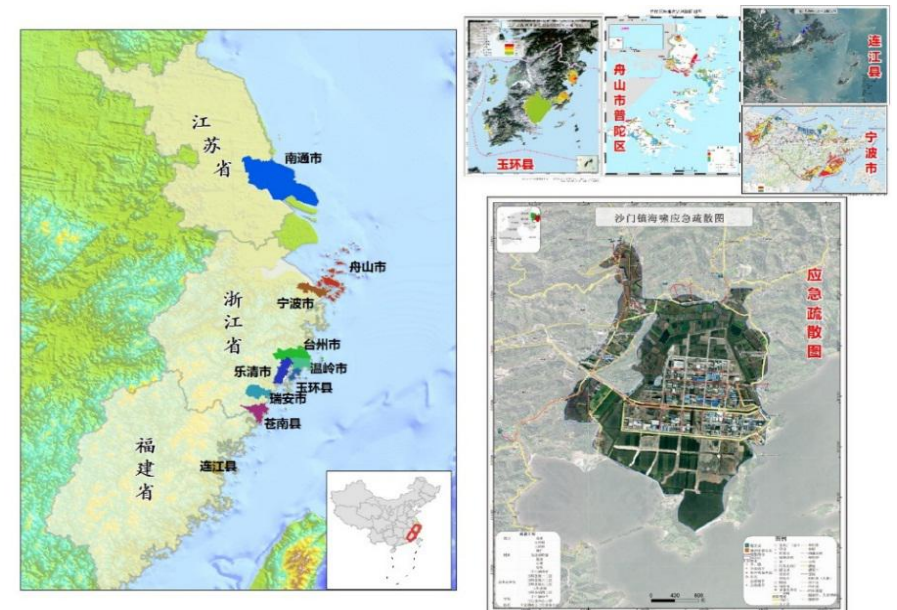
Tsunami



Focal mechanism inversion by using W-phase 1



- Quantified tsunami pre-warning data set
- Timed and refined tsunami numerical forecasting system
- Risk evaluation and regionalization of Tsunami



IOC/UNESCO South China Sea Tsunami Advisory Center (SCSTAC) starts to be trial-operational in 2018

We hope we could

Integrated systems

from global to coast

01

Refined techniques

high resolution, more accuracy

02

Diversificated elements

temerature, salinity, wave
hight, eddy,mix layer
thickness and so on

03

04

Customized services

optimal ship route,
optimal work window

Self-dependented innovation

marginal sea model,
storm surge model

05

1. 预报系统一体化

2. 预报技术精细化

3. 预报要素拓展化

4. 预报保障定制化

5. 预报创新自主化

Ecological Forecasts



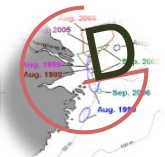
Ocean carbon cycle forecast in NWP & China Seas



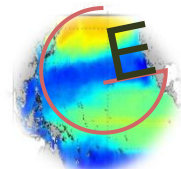
Jellyfish blooms in East China Sea



Red tide numerical warning

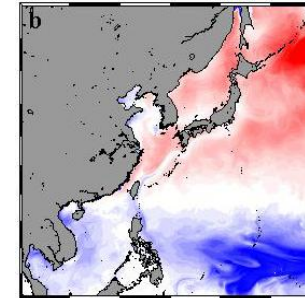


Hypoxia area numerical simulating

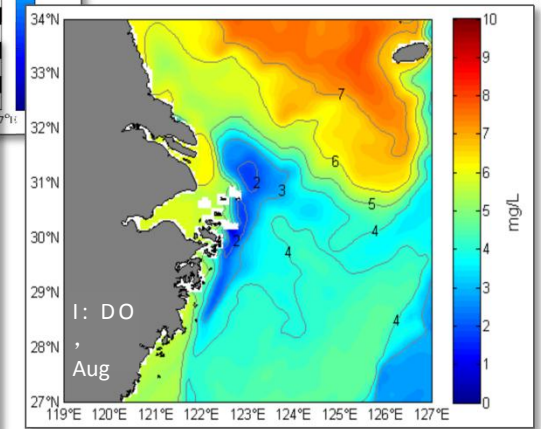
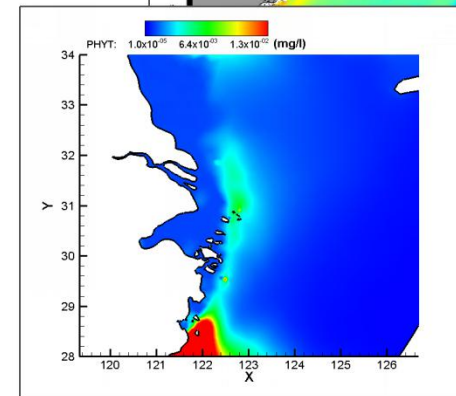
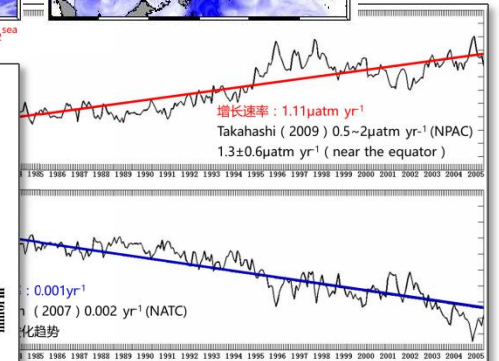
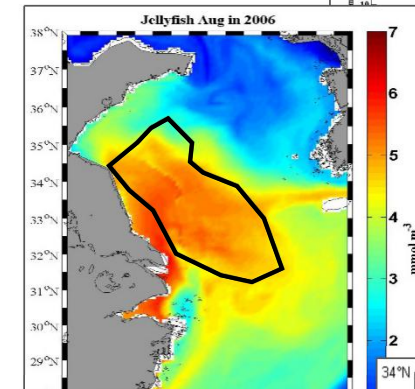
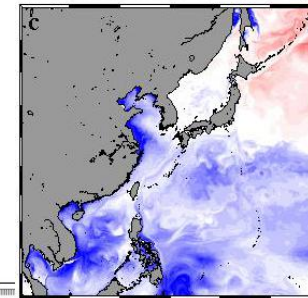


Marine Ecosystem numerical forecast system in NWP, ECS, SCS

Modeled CO2 airsea in May



Modeled CO2 airsea in Aug



Oil Spill and Pollutant

01

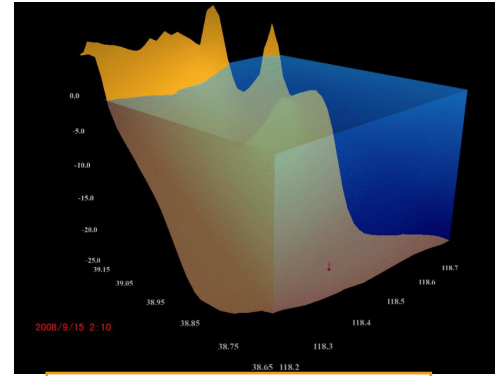
Forcing by wind, temperature, salinity, wave and current

02

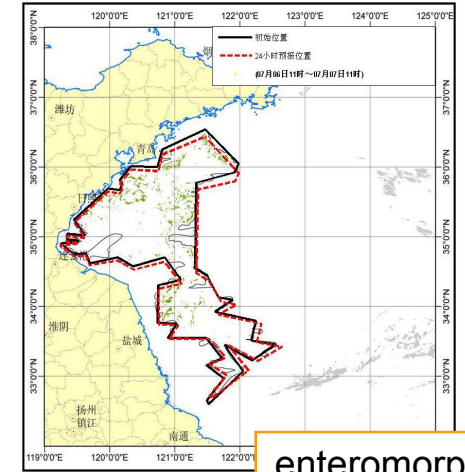
Input time, place, oil mass and discharge value and so on

03

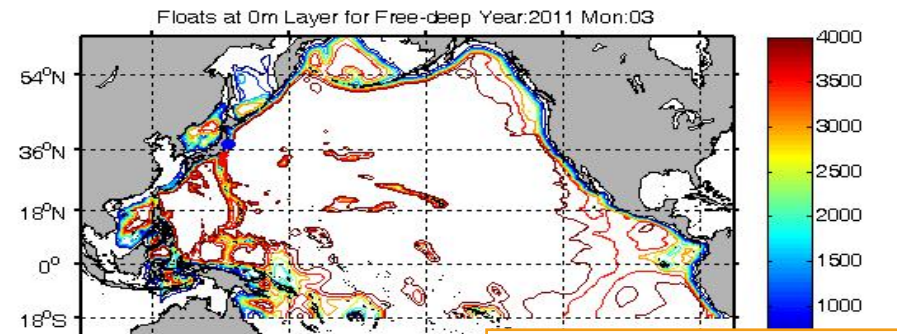
Ensemble diffusion models



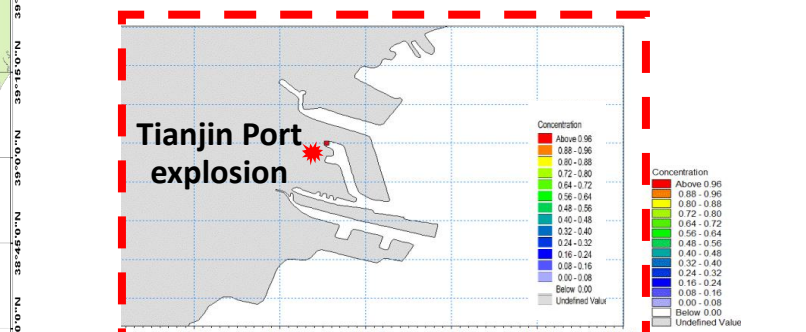
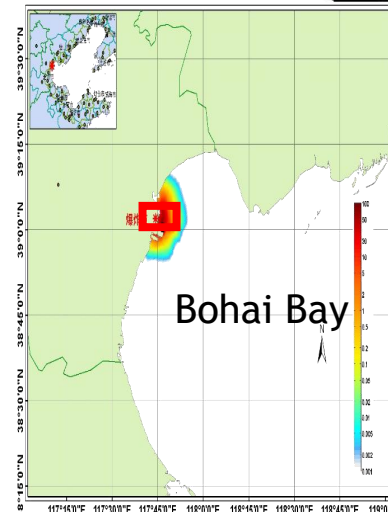
oil spill of pipeline



enteromorpha



nuclear leak in Japan



Dangerous chemicals explode near Tianjin City

Search and Rescue



- Marine Dynamic Forecast
- Calculate drift speed
- Calculate drift path
- Visually display
- Forecast products

high resolution forecast of wind and

NMEFCSAR

LEEWAY model

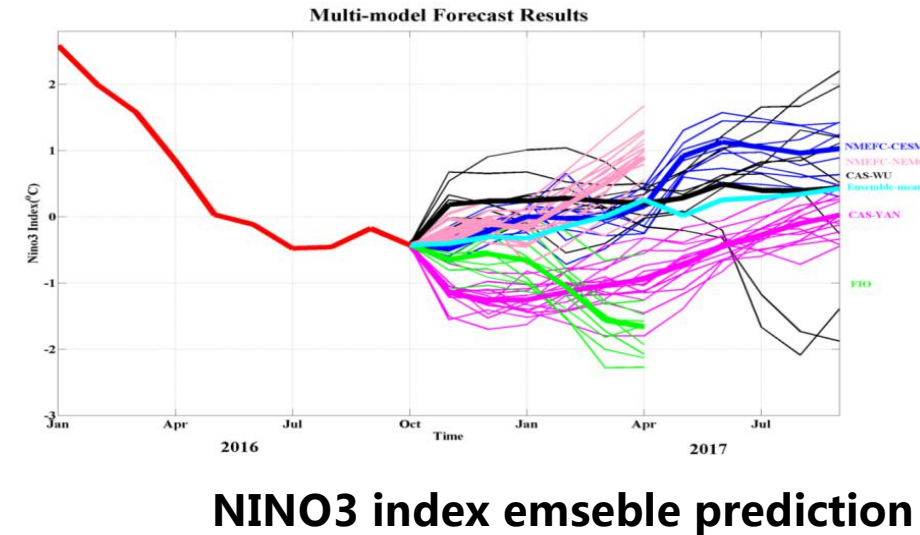
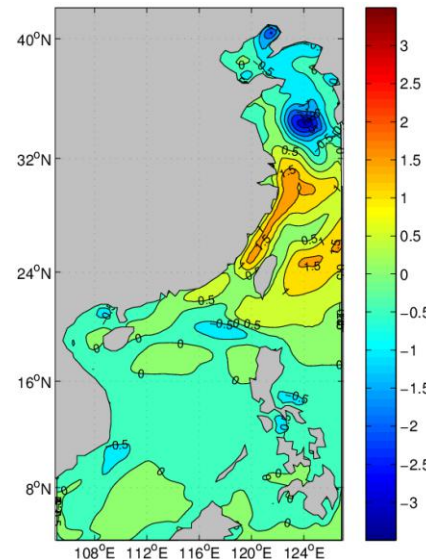
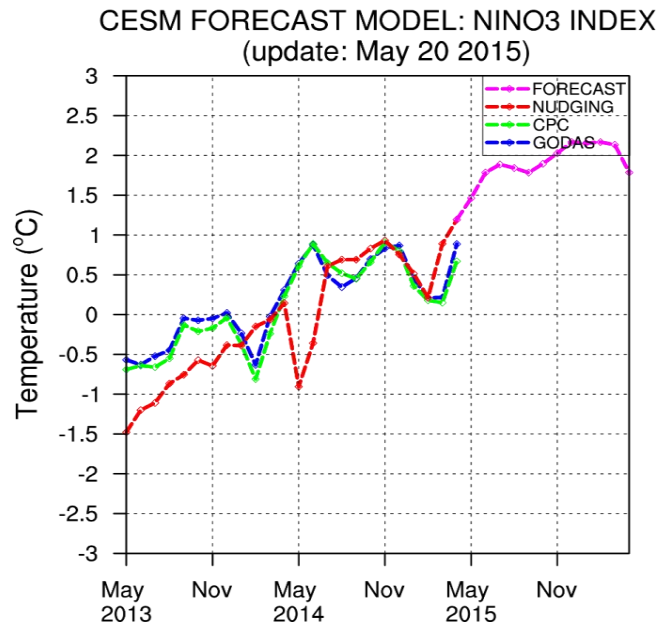
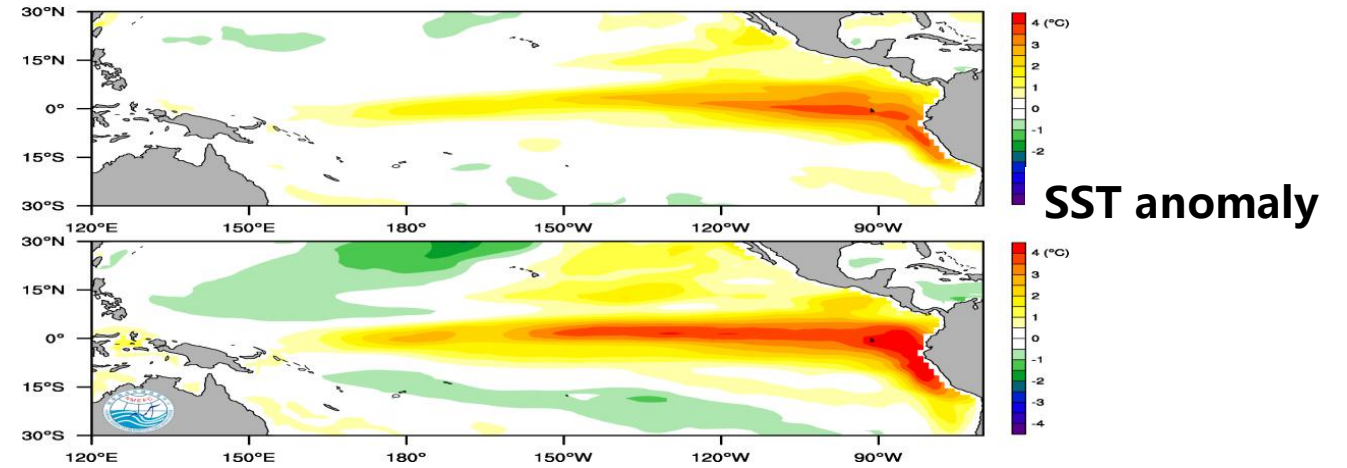
four order lagrange drift path model

visualization

drift path and search area of wrecked

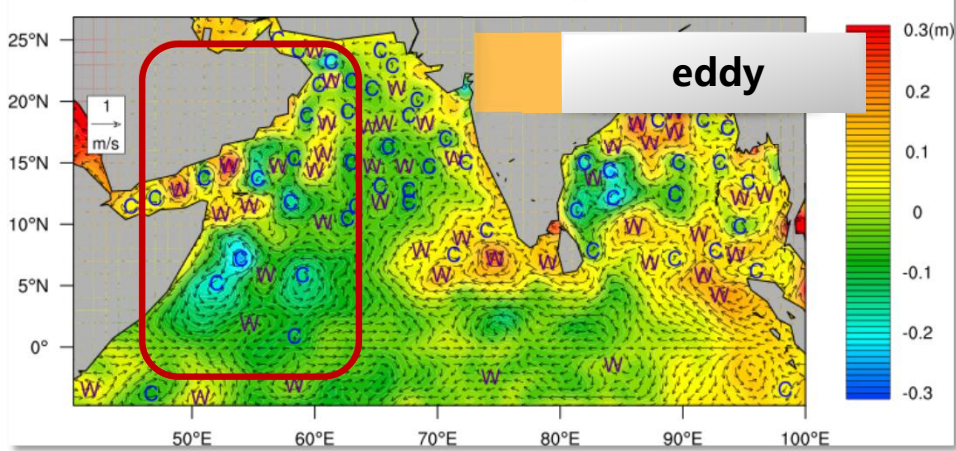
Climate prediction

- Time scale from monthly to annual
- El nino dynamic and statistic prediction
- Ensemble prediction of different models

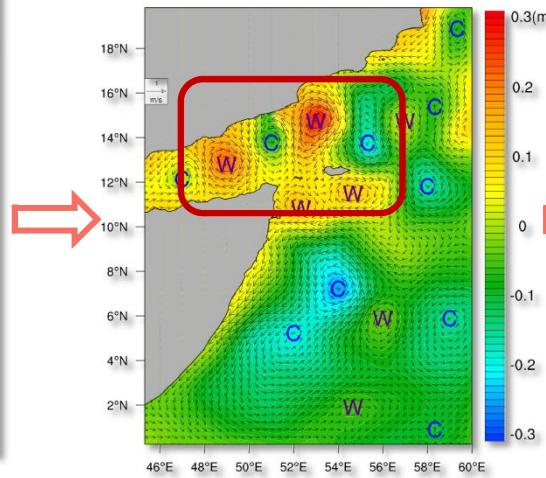


Diagnostic products

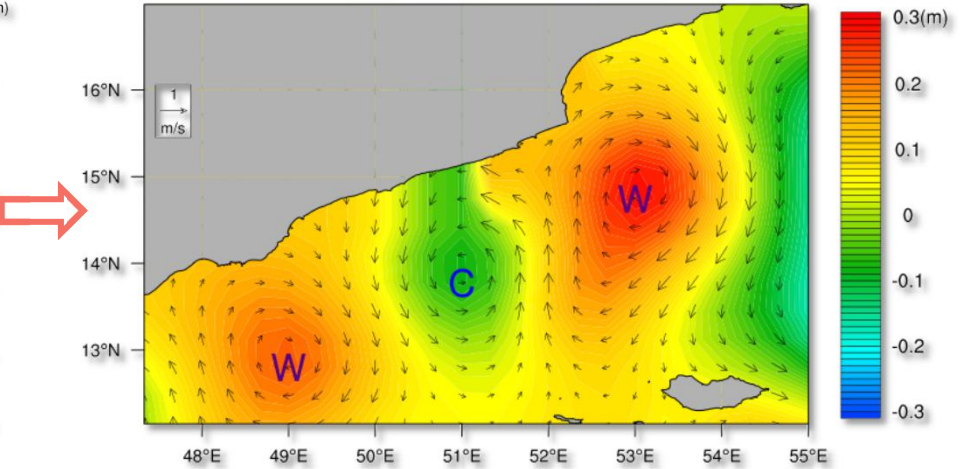
20140105 Sea Level Anomaly



20140105 Sea Level Anomaly

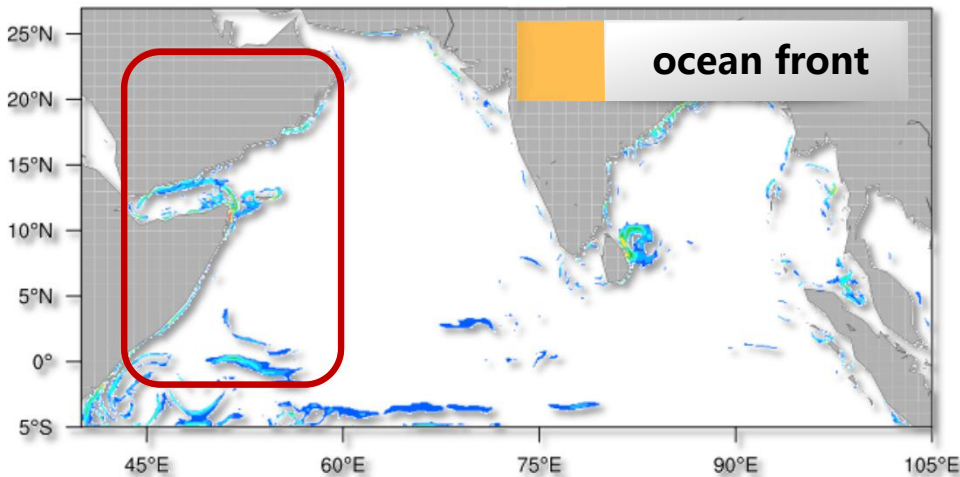


20140105 Sea Level Anomaly

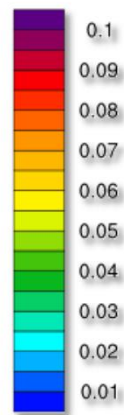


50m sst gradient 2014010520 24

C/km

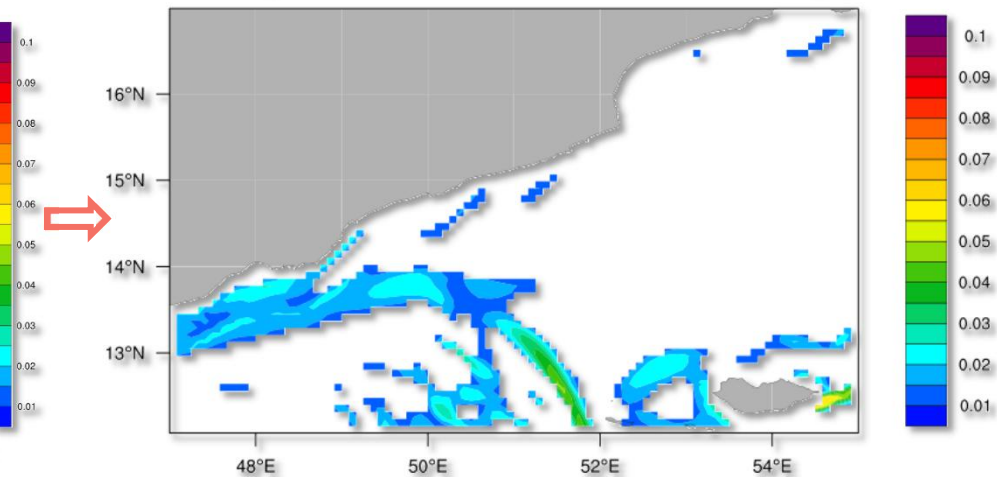


50m sst gradient 2014010520 24 C/km



50m sst gradient 2014010520 24

C/km



indian ocean

regional

coastal

We hope we could

Integrated systems

from global to coast

01

Refined techniques

high resolution, more accuracy

02

Diversificated elements

temerature, salinity, wave
hight, eddy,mix layer
thickness and so on

03

Customized services

optimal ship route,
optimal work window

04

Self-dependent innovation

marginal sea model,
storm surge model

05

1. 预报系统一体化

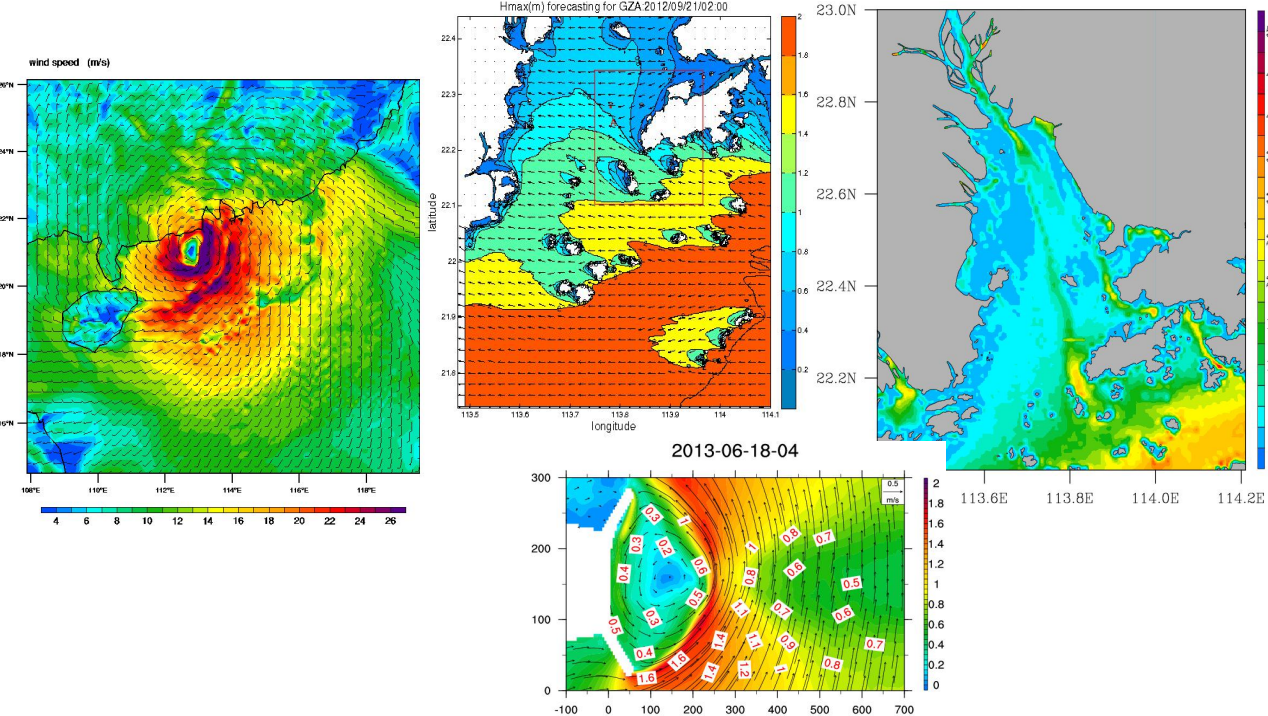
2. 预报技术精细化

3. 预报要素拓展化

4. 预报保障定制化

5. 预报创新自主化

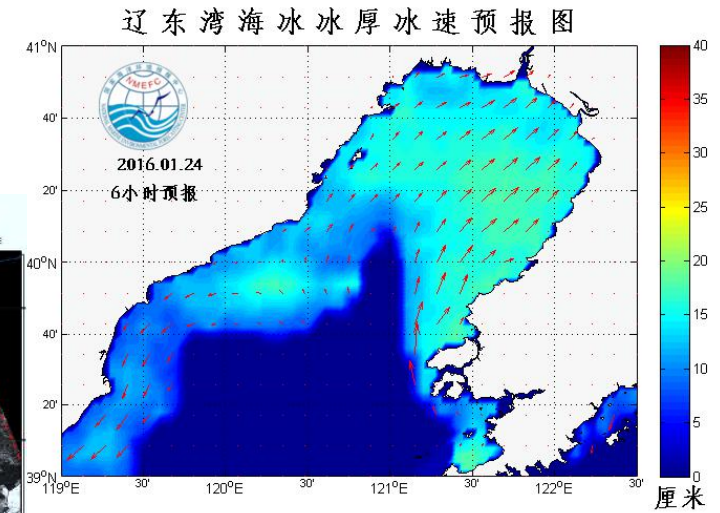
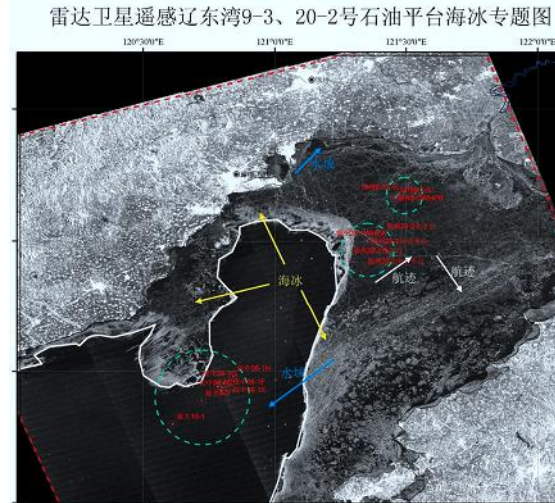
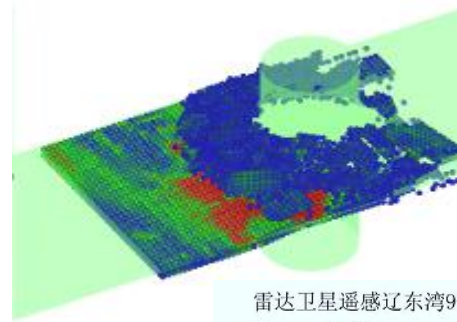
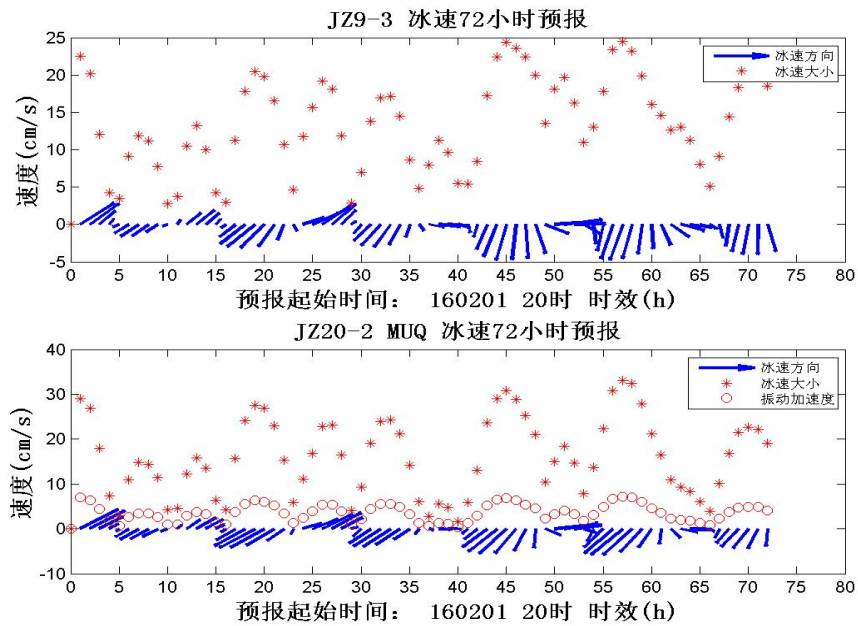
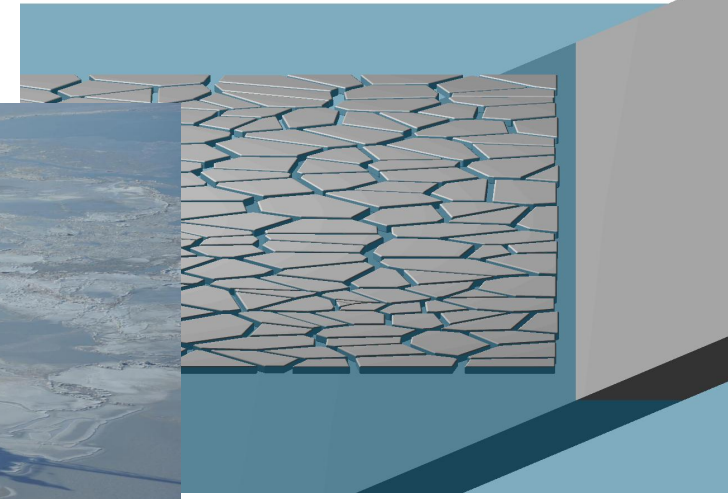
Safe construction of Hong Kong-Zhuhai-Macao Bridge



select time window decide time window confirm time window insitu guarantee

Sea Ice

- High resolution Sea Ice numerical forecasting system in Bohai Sea and north of Yellow Sea
- Sea ice vibration forecasting system near oil platform
- New techniques like Sea ice discrete element method and so on.



We hope we could

Integrated systems

from global to coast

01

Refined techniques

high resolution, more accuracy

02

Diversificated elements

temerature, salinity, wave
hight, eddy,mix layer
thickness and so on

03

Customized services

optimal ship route,
optimal work window

04

Self-dependent innovation

marginal sea model,
storm surge model

05

1. 预报系统一体化

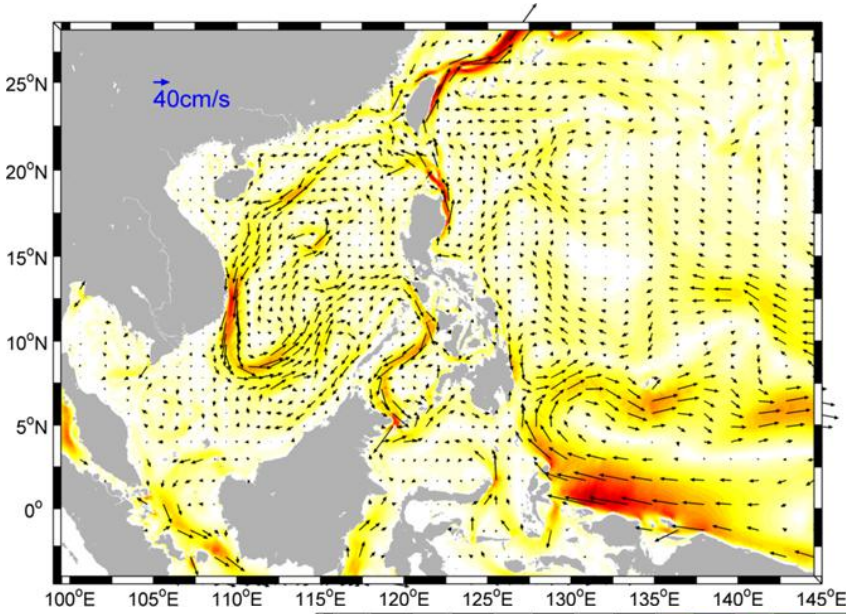
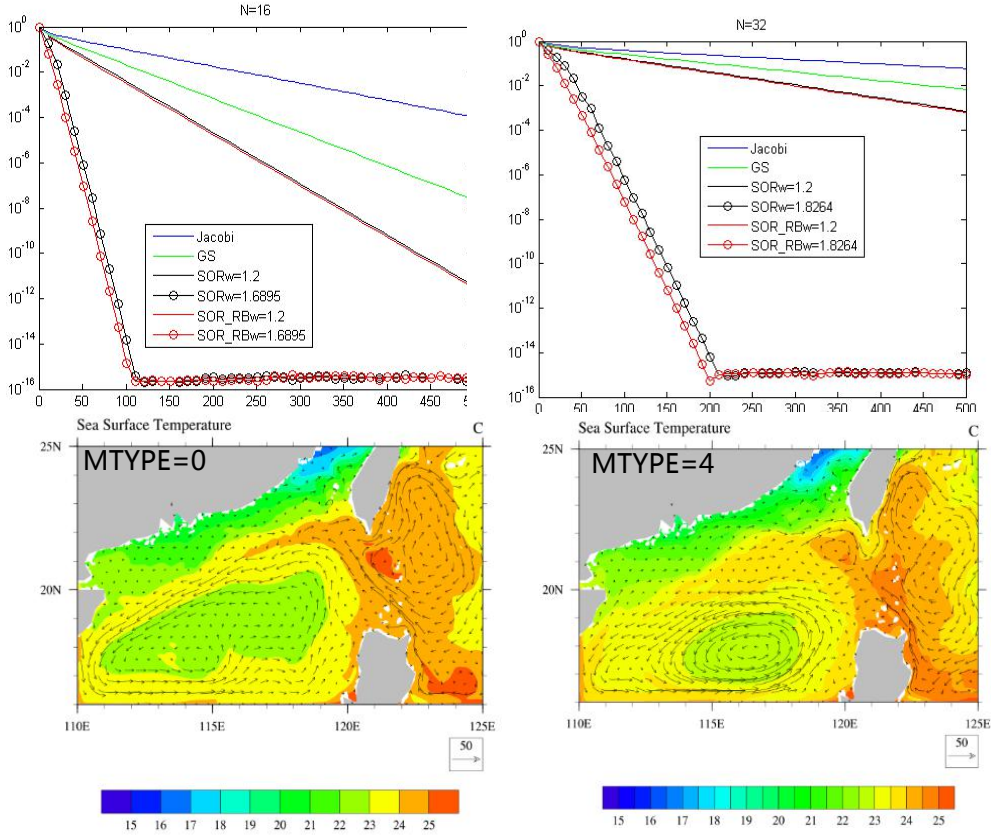
2. 预报技术精细化

3. 预报要素拓展化

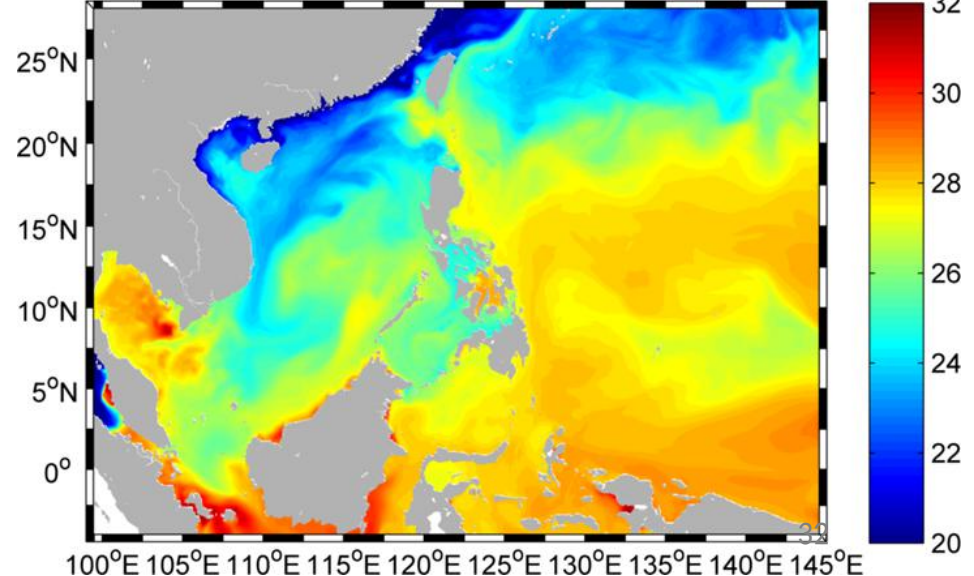
4. 预报保障定制化

5. 预报创新自主化

Marginal sea model



test case in SCS



A Non-hydrostatic coordinates model has been build in China Seas non-hydro static parameter MTYPE=4

Outline

- Introduction of NMEFC
- Status of marine forecasting and pre-warning
- **Cases of Social benefits**
- Summary and future

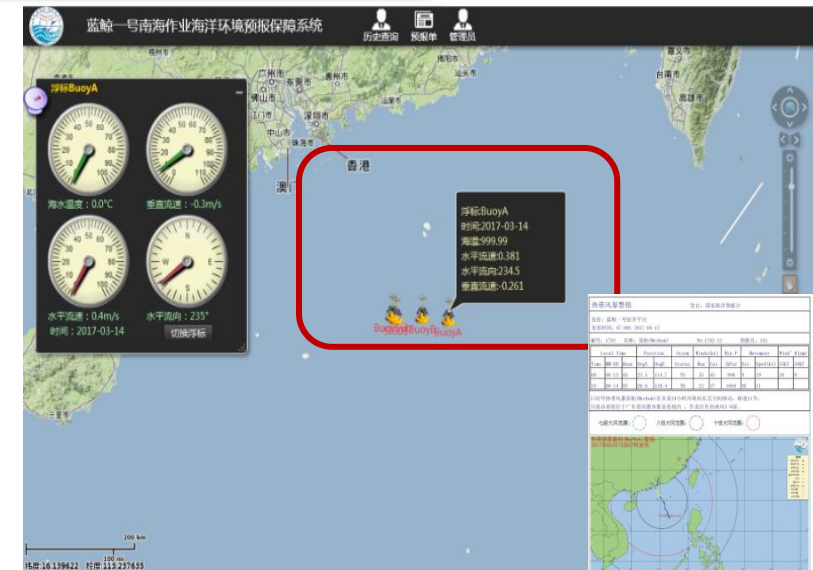
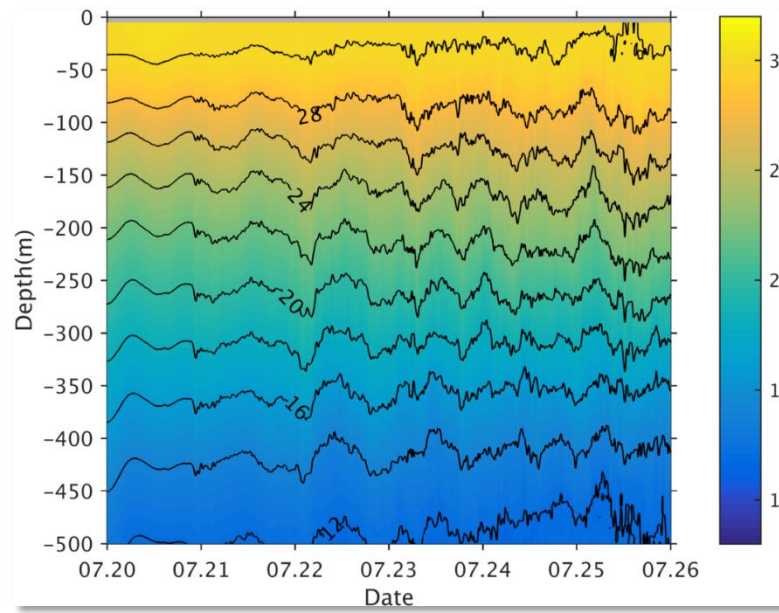
Services to Government

The image features a world map with several callout boxes, each containing a photograph and a text label describing a government service. The callouts are as follows:

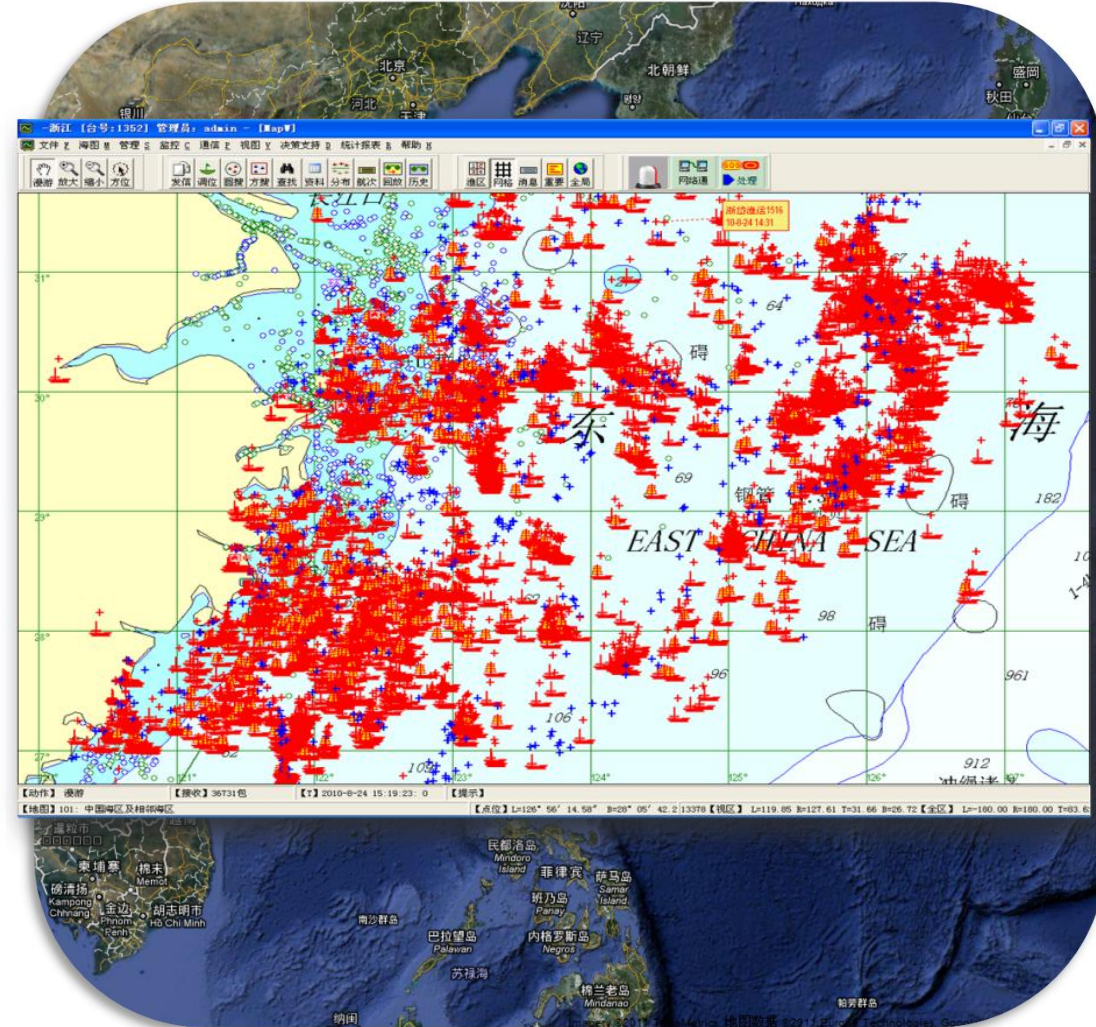
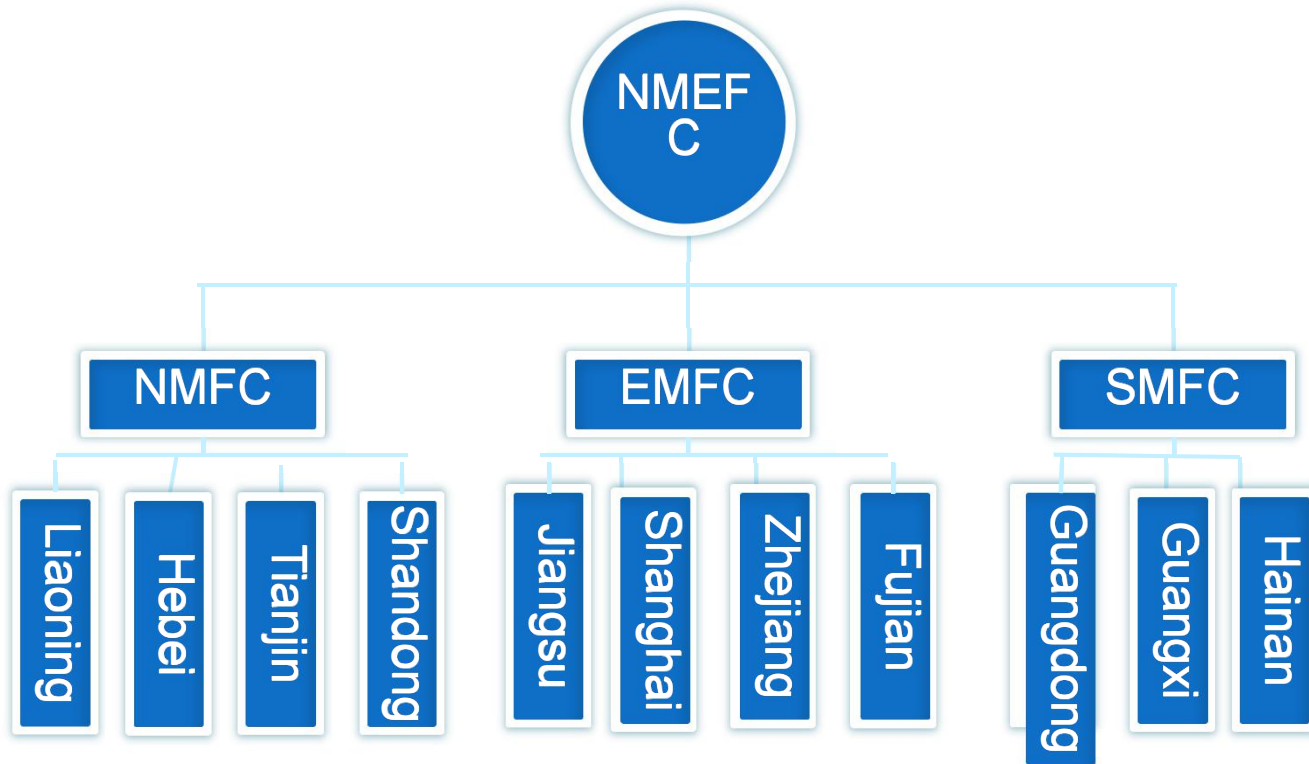
- Antarctic Expedition:** Located at the top and bottom of the map, each featuring a red and white icebreaker ship.
- Gulf of Aden Escort Guarantee:** Located on the left side of the map, featuring a photograph of a naval escort.
- Radioactive material monitoring in West Pacific:** Located in the central Pacific region, featuring a white research vessel.
- test guarantee of "Jiaolong" deep diving device:** Located in the western Pacific, featuring the deep-sea submersible Jiaolong.
- MH370 search safety:** Located in the Indian Ocean region, featuring a map of the search area with Chinese text labels.
- weather forecast in Zhongshan Station:** Located at the bottom left, featuring a stone monument with the characters "中山站" (Zhongshan Station).
- weather forecast in Great Wall Station:** Located at the bottom right, featuring a stone monument with the characters "长城站" (Great Wall Station).

Services to Society

- February to July, 2017
- First time mining of Gas hydrate in SCS
- Optimal time window
- Wind, wave, current, temperature, density and internal wave



Services to People



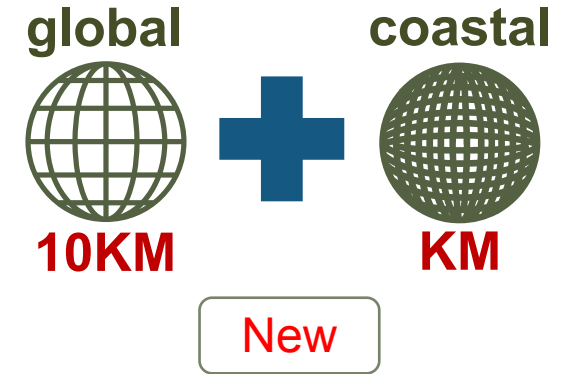
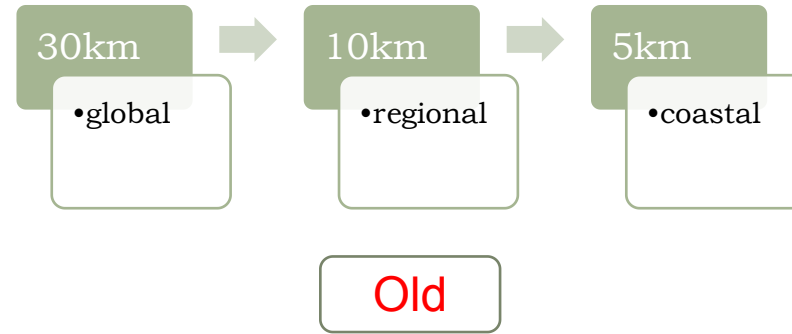
- Started from June, 2012 ;
- Ship monitoring, statistical analysis and website display
- leading time 72 hours
- wind, wave, temperature and so on

Outline

- Introduction of NMEFC
- Status of marine forecasting and pre-warning
- Cases of Social benefits
- **Summary and future**

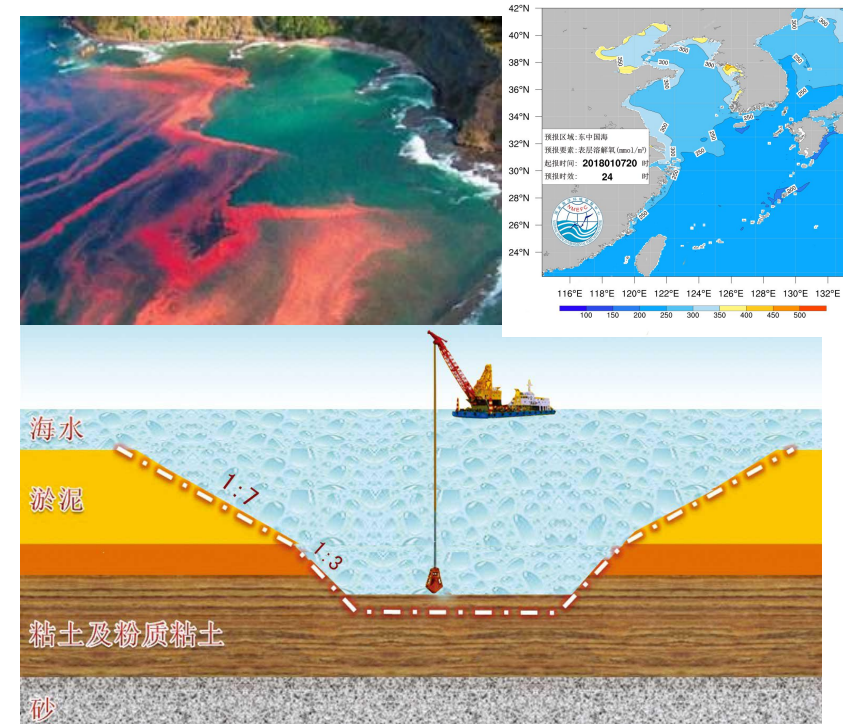
System structure update

- 3 levels to 2 levels



- More focus on marine ecological system

- Customized services improvement



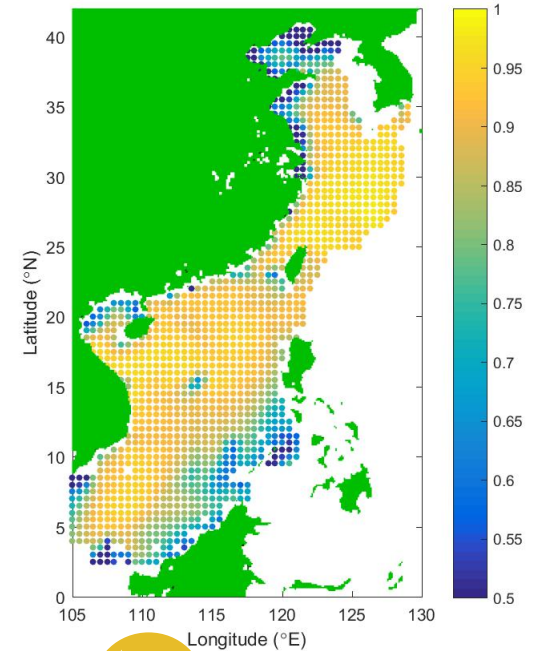
Two innovative development projects

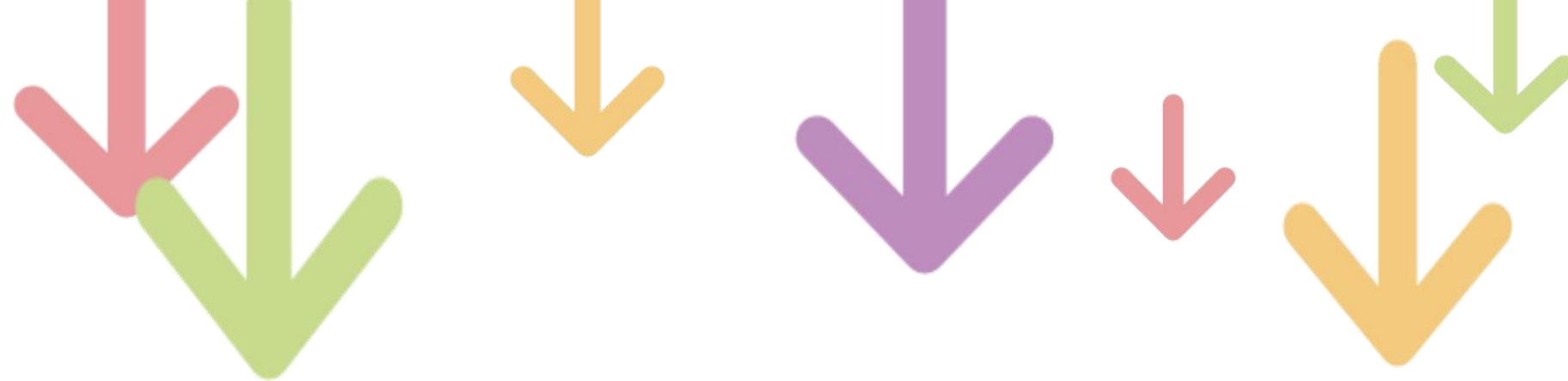
- Intelligentialize

include intelligent gridding forecasting products, nowcast AI prewarning products and coastal basic forecasting products

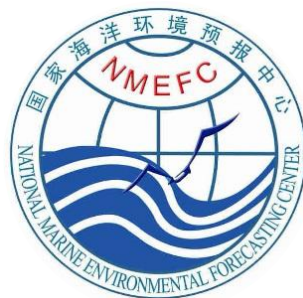
- Independent development

New self-dependented models include storm surge, ocean wave, circulation, climate, Tsunami





Thank you for attention!



www.nmefc.cn